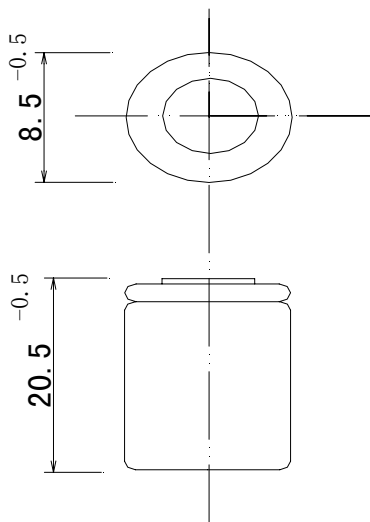


Model H120-1/2AAAA

Specifications of single cell

Nominal voltage		1.2V	
Capacity		0.2CA Discharge	1.0CA Discharge
	Typical	315min	57min
	Minimum	300min	54min
Dimensions		mm	
	Diameter	8.5 ^{-0.5}	
	Height	20.5 ^{-0.5}	
Weight(Approximately)		gram	
		3.5	
Internal Impedance At 1000 Hz		≤80mΩ (After Charge)	
Charge	Standard	12mA(0.1CA)×16h	
	Rapid	120mA(1.0CA)×1.2h	
Ambient temperature		°C	
	Charge	standard	0°C to 45°C
		Rapid	10°C to 40°C
	Discharge	-20°C to 65°C	
Storage	-20°C to 45°C		

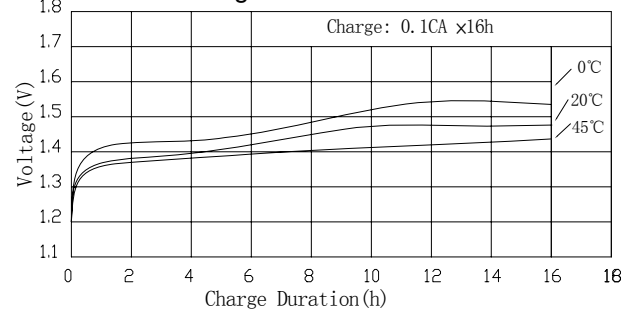


Note:

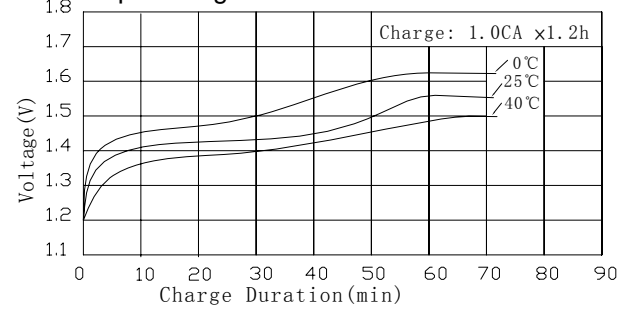
1. Nominal capacity, rated at 0.2CA 20°C.
2. Average capacity, for reference only.
3. Weight and internal impedance are For reference only.
4. Standard according as IEC of test cycle life.

Typical characteristics

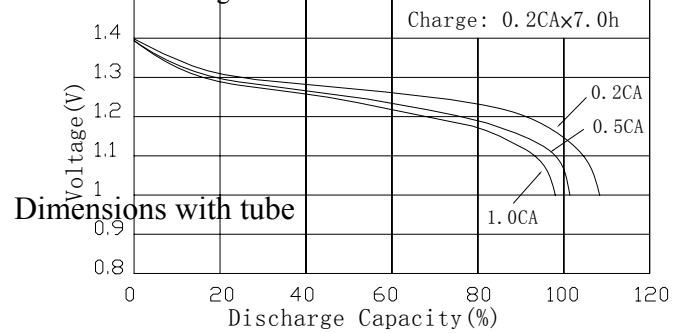
Standard charge characteristics



Rapid charge characteristics

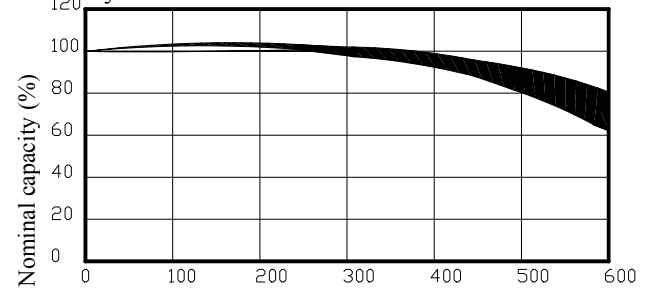


Discharge characteristics



Dimensions with tube

Cycle life characteristics



Number of cycles life curve

Charge retention curves of Ni-MH cylindrical cell at various storage temperature

