



PCM for 25.2/25.9V Lilon Battery Pack

SPECIFICATIONS

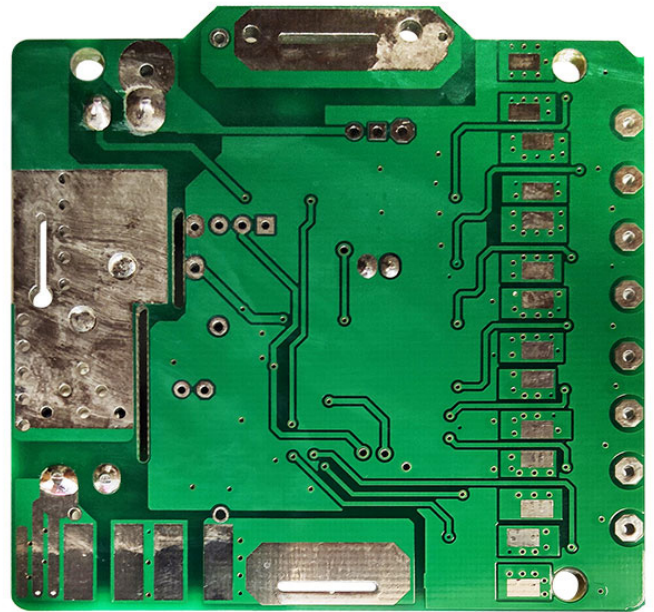
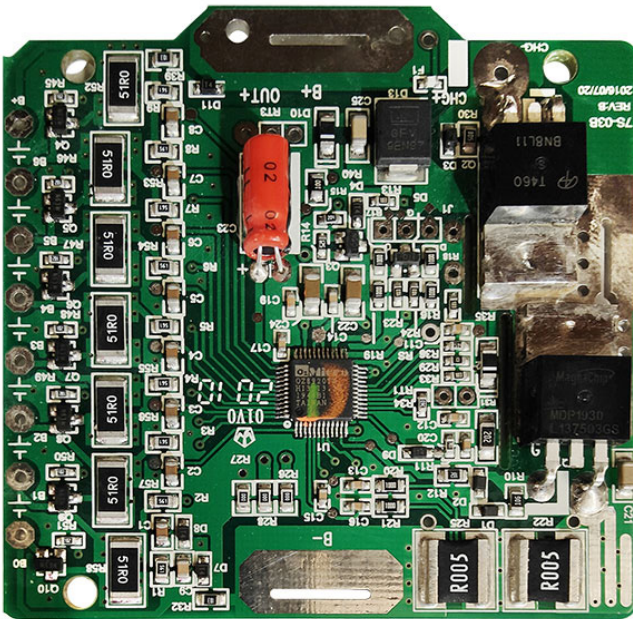
No.	Test Item	Criterion	
1	Voltage	Charging voltage	DC:29.4V CC/CV
		Balance voltage for single cell	4.05V
2	Current	Balance current for single cell	80mA
		Low current consumption for single cell	<2mA
		Maximal continuous discharging current	<15A
3	Over Charge Protection	Over charge detection voltage	30.1 ± 0.175 V
		Over charge detection delay time	2s
		Over charge release voltage	29.05 ± 0.175 V
4	Over Discharge Protection	Over discharge detection voltage	18.2 ± 0.175 V
		Over discharge detection delay time	2s
		Over discharge release voltage	23.1 ± 0.175 V
5	Over Current Protection	Over current charge detection	8 ± 1A
		Over current charge delay	2sec
		Over current charge release	16s
		Over current discharge detection	25 ± 1A
		Over current discharge delay	2sec
		Over current discharge release	Disconnect load
6	Short Protection	Detection current	100 ± 2 A
		Detection delay time	313 μs
		Release condition	Disconnect Load
7	Temperature Protection	Over temperature charge	50 ± 3°C
		Over temperature charge release	40 ± 3°C
		Under temperature charge	-20 ± 3°C
		Under temperature charge release	-10 ± 3°C
		Over temperature discharge	75 ± 3°C
		Over temperature discharge release	60 ± 3°C
		Under temperature discharge	-20 ± 3°C
		Under temperature discharge release	-10 ± 3°C
Temperature protection delay	2sec		
8	Resistance	Protection circuitry	≤20 mΩ
9	Dimensions	L 70.0mm x W 69.0mm x T 6.0mm	





PCM for 25.2/25.9V Lilon Battery Pack

IMAGE



CONNECTION DIAGRAM

