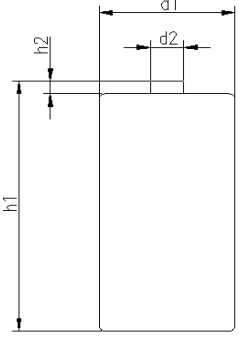


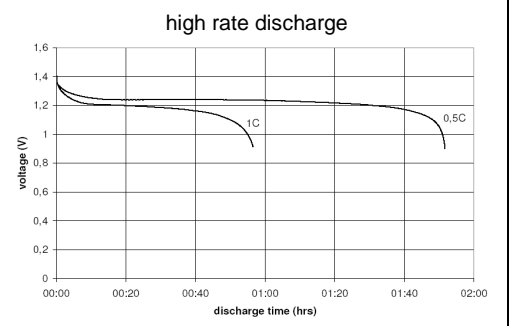
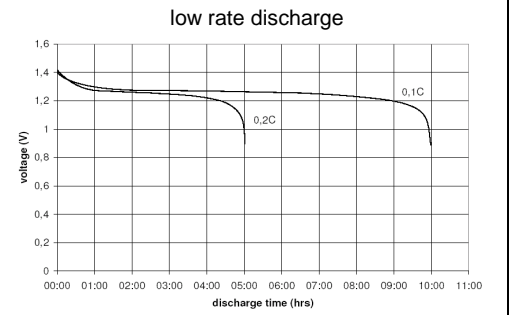
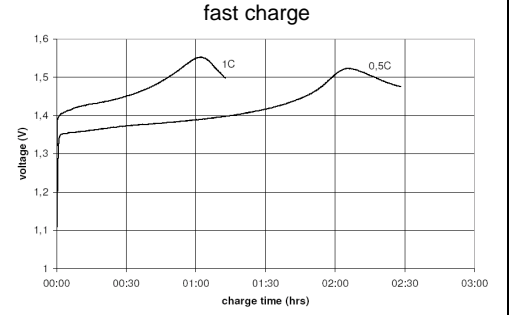
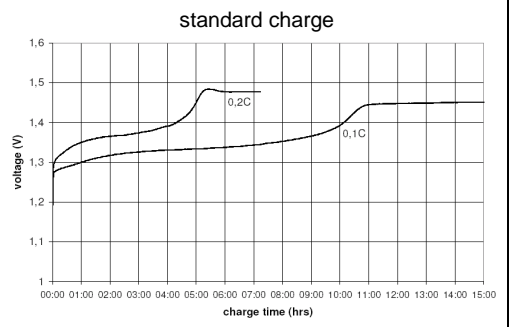
		Conditions	
cell type:		NiMH	
cell size:		D	
nominal voltage:	1.2	V	
max. charge voltage:	1.5	V	
		at standard charge (0.1C / 20°C)	
capacity			
nominal:	10000	mAh	discharge at 0.2C
minimum:	9300	mAh	discharge at 0.2C
	8500	mAh	discharge at 1C
		1.0V end discharge voltage	
		ta: 20°C	
max. continuous discharge current:	10	A	ta: 0...45°C
charge	current	time	
standard charge:	1000	mA	14...16hrs
quick charge:	2750	mA	4hrs
fast charge:	5000	mA	2.3hrs
recommended charge termination control parameters:	0...5	mV	- ΔV (-deltaV)
	0.8...1	°C	temperature rise per minute
	45...50	°C	TCO (temperature cut off)
trickle charge current:	50...350	mA	(recommended)
continuous overcharge: (less than 1 year)	≤ 750	mA	no conspicuous deformation no leakage
internal resistance: (impedance)	≤ 15	mΩ	at 1KHz battery fully charged
life expectancy:	≥ 500	cycles	acc. IEC standard
self discharge			
charge retention:	≥ 60	%	after 28 days storage at 20°C
initial capacity:	≥ 3000	mAh	within 30 days after delivery discharge at 0.2C
ambient temperature range:	0...45	°C	standard charge
	10...40	°C	fast charge
	0...45	°C	discharge (≥1C)
	- 20...65	°C	discharge (<1C)
	- 20...50	°C	storage (≤1month)
	- 20...40	°C	storage (≤3months)
	- 20...30	°C	storage (≤12months)

QCT1: 20/9000/15
QCT2: 30/8500/15

mechanical specifications			
cell dimensions			
diameter d1:		32.8 - 1.0	mm
diameter d2:	max.	9.5	mm
height h1:		61.5 - 2.0	mm
height h2:	min.	1.5	mm
weight:		160 ± 8	g
blister card dimensions:		123 x 85	mm
blister card weight (incl. batteries):		330	g



Diagrams



ANSMANN Specifications for model:	D - 1000mAh 2pcs blister package
data sheet no. / part no.	5030642
supplier no.	701364
author / date	Gramlich / 03.03.2012

Manufacturer reserves the right to alter or amend the design, model and specification without prior notice