



## PCM for 14.4/14.8V Lilon Battery Pack

### SPECIFICATIONS

**No. Test Item** \*Test at normal temperature 25±2°C and relative humidity ≤90%.

**Criterion**

| No. | Test Item                   | Criterion  |                      |                |               |
|-----|-----------------------------|--|----------------------|----------------|---------------|
| 1   | Voltage                     | Charging voltage<br>DC: 16.8V CC/CV (4.2V/1cell) |                      |                |               |
| 2   | Current                     | Current Consumption (Software)                   | <550µA               |                |               |
|     |                             | Current Consumption (Sleep Mode)                 | <124µA               |                |               |
|     |                             | Maximal Continuous Charging Current              | 6A                   |                |               |
|     |                             | Maximal Continuous Discharging Current           | 20A                  |                |               |
| 3   | Over Current Protection     | OCC1 Threshold                                   | 6000mA               | OCD1 Threshold | 20000mA       |
|     |                             | OCC1 Delay                                       | 2s                   | OCD1 Delay     | 10s           |
|     |                             | OCC2 Threshold                                   | 7000mA               | OCD2 Threshold | 22000mA       |
|     |                             | OCC2 Delay                                       | 2s                   | OCD2 Delay     | 2s            |
| 4   | Over Charge Protection      | POV Threshold                                    | 17.500V±0.05V        | POV Recovery   | 16.000V±0.05V |
|     |                             | POV Delay  | 2s                   |                |               |
|     |                             | COV Threshold                                    | 4.350V±0.05V         | COV Recovery   | 3.900V±0.05V  |
|     |                             | COV Delay  | 2s                   |                |               |
| 5   | Over Discharge Protection   | CUV Threshold                                    | 3.000V±0.05V         | CUV Delay      | 2s            |
|     |                             | CUV Recovery                                     | 3.250V±0.05V         |                |               |
| 6   | Over Temperature Protection | OTC Threshold                                    | +70°C±3°C            | UTC Threshold  | -5°C±3°C      |
|     |                             | OTC Delay  | 2s                   | UTC Recovery   | 0°C±3°C       |
|     |                             | OTC Recovery                                     | +55°C±3°C            |                |               |
|     |                             | OTD Threshold                                    | +80°C±3°C            | OTD Delay      | 2s            |
|     |                             | OTD Recovery                                     | +55°C±3°C            | OTD Recovery   | +55°C±3°C     |
| 7   | Secondary Protection        | Cell   | 4.75V±0.1V           |                |               |
| 8   | Short Protection            | Detection Condition                              | P+, P- Short Circuit |                |               |
|     |                             | Detection Delay Time                             | 200-500µs            |                |               |
|     |                             | Release Condition                                | Cut Load             |                |               |
| 9   | BMS IC                      | BQ20Z95  |                      |                |               |
| 10  | Temperature                 | Operating Temperature Range                      | -30°C~+85°C          |                |               |
|     |                             | Storage Temperature Range                        | -40°C~+125°C         |                |               |
| 11  | Dimensions                  | L 80.0mm x W 70.0mm x T 4.2mm                    |                      |                |               |

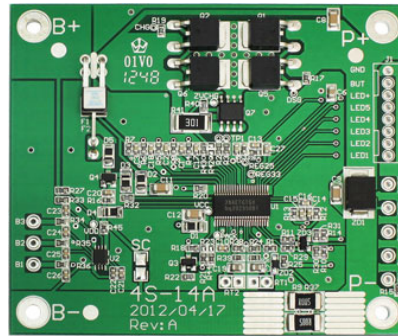




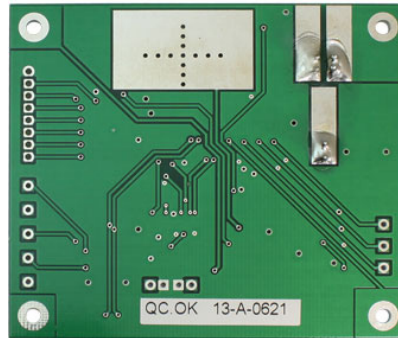
Lilon

### PCM for 14.4/14.8V Lilon Battery Pack

#### IMAGE



10K NTC



#### CONNECTION DIAGRAM

