

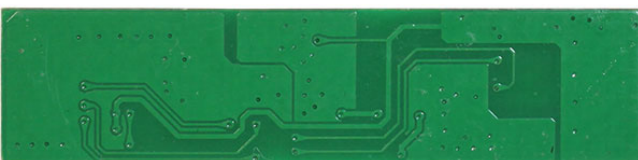
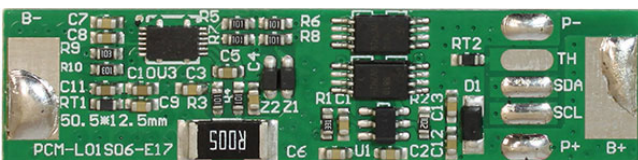


PCM for 3.6/3.7V Lilon Battery Pack

SPECIFICATIONS

No.	Test Item		Criterion
1	Capacity	Designing Battery Capacity	3.5Ah
2	Voltage	Charging voltage	DC:4.20V CC/CV
3	Current	Normal operating mode current: Fuel gauge in NORMAL mode. ILOAD > Sleep Current	≤100μA ≤20μA
		Maximal continuous Charging current	5A
		Maximal continuous Discharging current	5A
4	Over Charge Protection	Over charge detection voltage	4.25±0.05V
		Over charge detection delay time	0.5S—2S
		Over charge release voltage	4.05±0.1V
5	Over Discharge Protection	Over discharge detection voltage	2.50±0.1V
		Over discharge detection delay time	10mS—200mS
		Over discharge release voltage	2.50±0.1V
6	Over Current Protection	Over current detection voltage	12±2A
		Detection delay time	5ms—60ms
		Release condition	Cut Load
7	Short Protection	Detection condition	Exterior short circuit
		Detection delay time	200-800μs
		Release condition	Cut Load
8	Resistance	Protection circuitry	≤100mΩ
9	BMS IC		BQ27542
10	Temperature	Operating Temperature Range	-40~+85°C
		Storage Temperature Range	-40~+125°C
11	Dimensions	L 50.5mm x W 12.5mm x T 2.0mm	

LAYOUT DIAGRAM



CONNECTION DIAGRAM

