

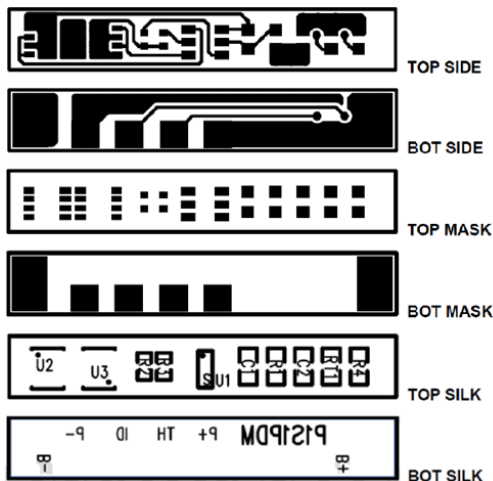


### PCM for 3.6/3.7V Li-Ion Battery Pack

#### SPECIFICATIONS

No.	Test Item	Criterion	
1	Voltage	Charging voltage	4.2VDC
		Balance voltage for single cell	N/A
2	Current	Balance current for single cell	N/A
		Low current consumption for single cell	N/A
		Maximal continuous charging current	3A
		Maximal continuous discharging current	3A
3	Over Charge Protection	Over charge detection voltage	4.275±0.025V
		Over charge detection delay time	0.96 ~ 1.4 s
		Over charge release voltage	4.175±0.025V
4	Over Discharge Protection	Over discharge detection voltage	2.30±0.05V
		Over discharge detection delay time	115 ~ 173 ms
		Over discharge release voltage	2.40±0.05V
5	Over Current Protection	Over current detection voltage	N/A
		Over current detection current	3 - 10A
		Detection delay time	7.2 ~ 11 ms
		Release condition	Reset by load release
6	Short Protection	Detection delay time	220 ~ 380 µsec
7	Supply Current	Normal mode	7.0 (max) µA
		Sleep mode	0.1 (max) µA
8	Resistance	Protection circuitry (MOSFET)	N/A
9	Temperature	Operating Temperature Range	-40~+85°C
		Storage Temperature Range	-40~+125°C
10	Dimensions	L 28mm x W 4.5mm x T 2mm	

#### LAYOUT DIAGRAM



#### CONNECTION DIAGRAM

