



PCM for 21.6/22.2V Lilon Battery Pack

SPECIFICATIONS

No.	Test Item	Criterion	
1	Voltage	Charging voltage	DC: 25.2V CC/CV (4.2V/1cell)
		Balance voltage for single cell	4.2±0.05V
2	Current	Balance current for single cell	68±10mA
		Current consumption for single cell	≤160uA
		Maximal continuous charging current	5A
		Maximal continuous discharging current	5A
3	Over Charge Protection	Over charge detection voltage	4.25±0.05V
		Over charge detection delay time	0.5S—2S
		Over charge release voltage	4.05±0.1V
4	Over Discharge Protection	Over discharge detection voltage	2.75±0.1V
		Over discharge detection delay time	10—30mS
		Over discharge release voltage	3.0±0.1V
5	Over Current Protection	Over current detection voltage	N/A
		Over current detection current	35±5A
		Detection delay time	5ms—60ms
		Release condition	Cut load
6	Short Protection	Detection condition	Exterior short circuit
		Detection delay time	200-800us
		Release condition	Cut load
7	Communication	I2C	
8	Resistance	Protection circuitry (MOSFET)	≤50mΩ
9	Temperature	Operating Temperature Range	-40~+85°C
		Storage Temperature Range	-40~+125°C
10	Dimensions	L 105.0mm x W 50.0mm x T 8.0mm	

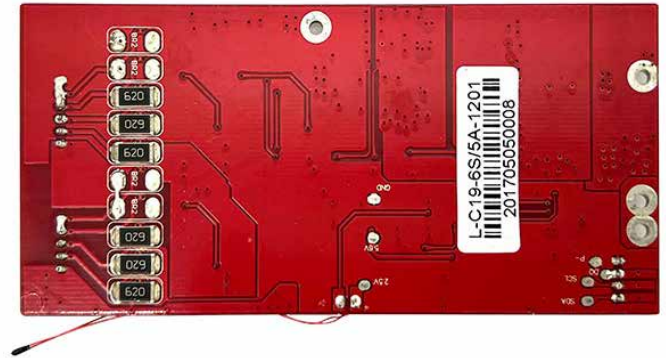
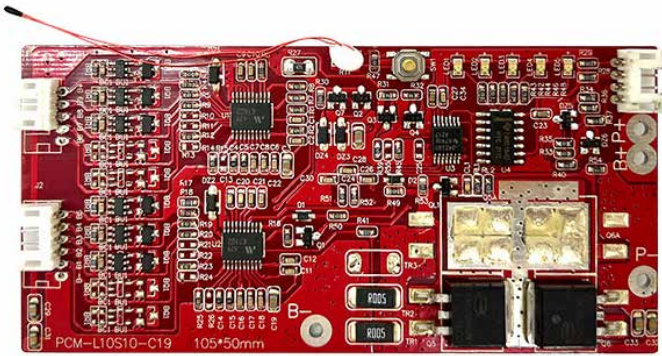




Lilon

PCM for 21.6/22.2V Lilon Battery Pack

IMAGE



CONNECTION DIAGRAM

