

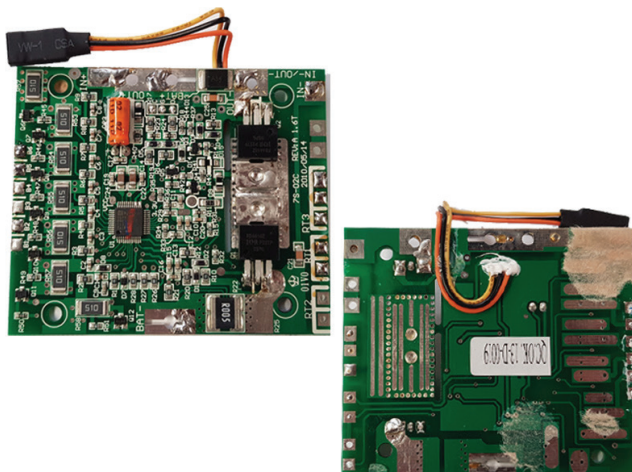


### PCM for 25.2/25.9V Lilon Battery Pack

#### SPECIFICATIONS

No.	Test Item		Criterion
1	Voltage	Charging voltage	DC:29.4V CC/CV
		Balance voltage for single cell	4.05V
2	Current	Balance current for single cell	80mA
		Low Current consumption for single cell	power $\leq 840\mu\text{A}$ , $< 70\mu\text{A}$ sleep
		Maximal continuous Discharging current	$< 4\text{A}$
3	Over Charge Protection	Over charge detection voltage	$4.25\text{V} \pm 0.025\text{V}$
		Over charge detection delay time	2.0S
		Over charge release voltage	$4.15\text{V} \pm 0.025\text{V}$
4	Over Discharge Protection	Over discharge detection voltage	$2.60\text{V} \pm 0.025\text{V}$
		Over discharge detection delay time	2.0S
		Over discharge release voltage	$3.3 \pm 0.025\text{V}$
5	Over Current Protection	Over charge current detection voltage	0.01V (min)
		Over charge current detection current	N/A
		<b>Detection Delay time</b>	16S
		<b>Release condition</b>	16S
		Over discharge current detection voltage	0.295V (min)
		Over discharge current detection current	N/A
6	Short Protection	Detection Voltage	0.62V
		Detection Current	N/A
		Detection delay time	505us
7	Resistance	Release condition	External Release
8	Temperature	Operating Temperature Range	$-20 \sim +75^\circ\text{C}$
		Storage Temperature Range	$-20 \sim +85^\circ\text{C}$
9	Dimensions	L 120.0mm x W 47.0mm x T 9.0mm	

#### LAYOUT DIAGRAM



#### CONNECTION DIAGRAM

