

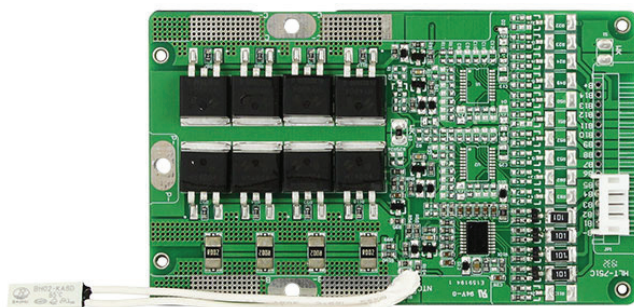


PCM for 13.2V LiFePO4 Battery Pack

SPECIFICATIONS

No.	Test Item	Criterion	
1	Voltage	Charging voltage	14.6V 3.65V*4CELL
		Balance voltage for single cell	3.55±0.025V
2	Current	Balance current for single cell	36±10mA
		Low current consumption for single cell	≤50uA
		Maximal continuous charging current	25A
		Maximal continuous discharging current	25A
3	Over Charge Protection	Over charge detection voltage	3.90V±0.025V
		Over charge detection delay time	0.5-1.5s
		Over charge release voltage	3.60V±0.050V
4	Over Discharge Protection	Over discharge detection voltage	2.00V±0.050V
		Over discharge detection delay time	0.5-1.5S
		Over discharge release voltage	2.70V±0.100V
5	Over Current Protection	Over current detection current	120±20A
		Detection delay time	0.5-1.5S
		Release condition	N/A
6	Short Protection	Detection condition	N/A
		Detection delay time	100-600us
		Release condition	Cut Off load
7	Resistance	Protection circuitry (MOSFET)	≤20mΩ
8	Temperature	Operating Temperature Range	-20~+60°C
		Charging/discharging Temperature Protection	65°C±5°C
9	Dimensions	L 100.0mm x W 60.0mm x T 10.0mm	

IMAGE



CONNECTION DIAGRAM

