

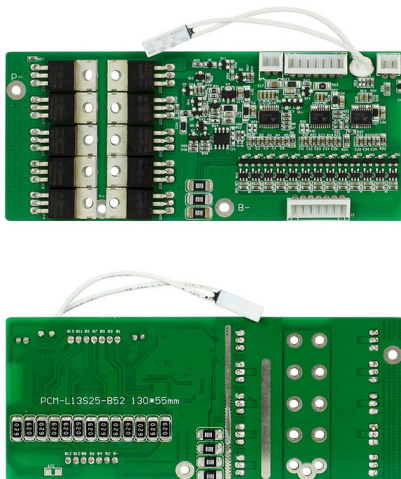


## PCM for 46.8/48.1V Lilon Battery Pack

### SPECIFICATIONS

No.	Test Item	Criterion	
1	Voltage	Charging voltage	DC:54.6V CC/CV
		Balance voltage for single cell	4.20V±0.05V
2	Current	Balance current for single cell	67±10mA
		Current consumption for single cell	≤150µA
		Maximal continuous Charging current	25A
		Maximal continuous Discharging current	25A
3	Over Charge Protection	Over charge detection voltage	4.25±0.05V
		Over charge detection delay time	0.5S—2S
		Over charge release voltage	4.15±0.1V
4	Over Discharge Protection	Over discharge detection voltage	2.75±0.1V
		Over discharge detection delay time	10mS—200mS
		Over discharge release voltage	3±0.1V
5	Over Current Protection	Over current detection current	110±20A
		Detection delay time	100ms—300ms
		Release condition	Cut load, auto recovery
6	Short Protection	Detection condition	Exterior short circuit
		Detection delay time	200-800us
		Release condition	Cut load, auto recovery
7	Resistance	Protection circuitry	≤20mΩ
8	Temperature	Operating Temperature Range	-40~+70°C
		Storage Temperature Range	-40~+125°C
9	Dimensions	L 130.0mm x W 55.0mm x T 8.0mm	

### LAYOUT DIAGRAM



### CONNECTION DIAGRAM

