



PCM for 12.8/13.2V LiFePO4 Battery Pack

SPECIFICATIONS

No.	Test Item		Criterion		
			Minimum	Typical	Maximum
1	Voltage	Charging voltage	14.6V 3.65V*4CELL		
		Balance voltage for single cell	3.55V	3.60V	3.65V
2	Current	Balance current for single cell	10mA	30mA	60mA
		Self consumption			100µA
		Maximal continuous charging current			25A
		Maximal continuous discharging current			25A
		Over charge protection voltage	3.65V	3.75V	3.80V
3	Over Charge Protection	Over charge protection delay time	700mS	1200mS	1700mS
		Over charge recovery voltage	3.55V	3.60V	3.65V
		Over discharge protection voltage	2.0V	2.1V	2.2V
4	Over Discharge Protection	Over discharge protection delay time	100mS		400mS
		Over discharge recovery voltage	2.2V	2.3V	2.4V
		Over discharge recovery conditions	Recharge or disconnect the load		
		Discharge overcurrent 1 protection current value	60A	90A	120A
5	Over Current Protection	Discharge overcurrent 1 protection delay	50mS		150mS
		Discharge overcurrent protection recovery conditions	Recharge or disconnect the load		
		Short circuit protection delay time	80µS	150µS	600µS
6	Short Protection	Short circuit protection recovery	Recharge or disconnect the load		
		Discharge circuit internal resistance			60mΩ
7	Resistance	Operating Temperature Range	-20°C		+70°C
		Discharging Temperature Protection	+60°C		+70°C
		Temperature Protection Release Value	+38°C		+58°C
8	Temperature				
9	Dimensions	L 66.0mm x W 34.0mm x T 8.0mm			

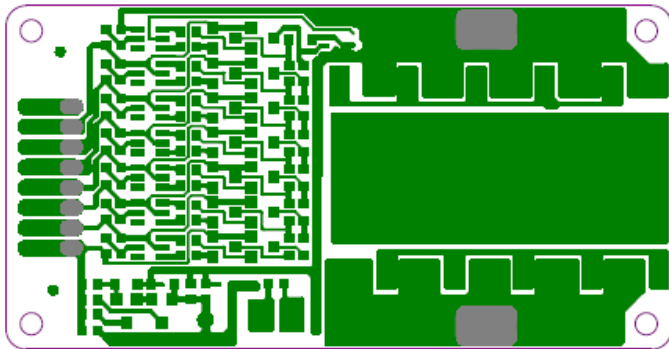
IMAGE



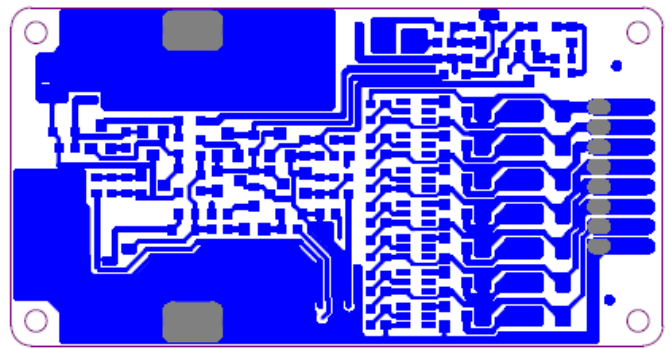


PCM for 12.8/13.2V LiFePO₄ Battery Pack

WIRING DIAGRAM



Top-level wiring diagram



Bottom line diagram

CONNECTION DIAGRAM

