

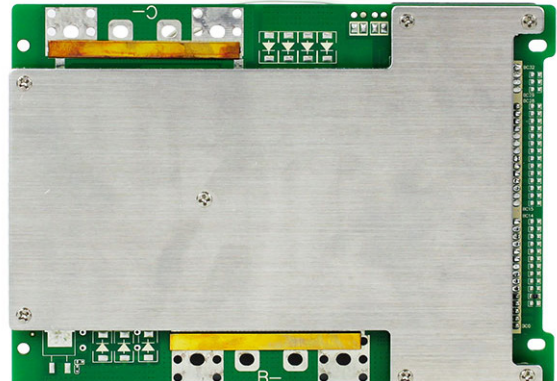
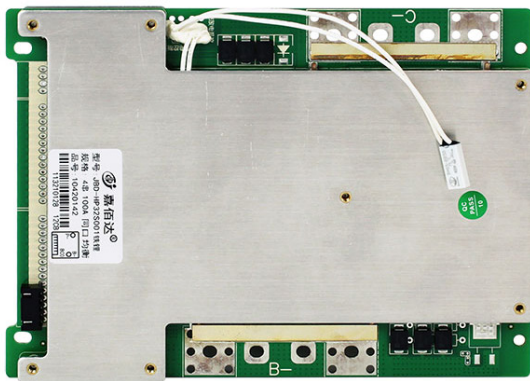


PCM for 12.8/13.2V LiFePO4 Battery Pack

SPECIFICATIONS

No.	Test Item		Criterion		
			Minimum	Typical	Maximum
1	Voltage	Operating voltage	8.4V		15V
		Balance voltage for single cell	3.55V	3.60V	3.65V
2	Current	Balance current for single cell	20mA		35mA
		Self consumption		50µA	100µA
		Maximal continuous charging current			100A
		Maximal continuous discharging current			100A
3	Over Charge Protection	Over charge protection voltage	3.70V	3.75V	3.80V
		Over charge protection delay time	500mS	1000mS	1500mS
		Over charge recovery voltage	3.55V	3.60V	3.65V
4	Over Discharge Protection	Over discharge protection voltage	2.0V	2.1V	2.2V
		Over discharge protection delay time	100mS		1000mS
		Over discharge recovery voltage	2.2V	2.3V	2.4V
		Over discharge recovery conditions	Charge recovery		
5	Over Current Protection	Discharge overcurrent 1 protection current value	400A		600A
		Discharge overcurrent 1 protection delay	100mS		1000mS
		Discharge overcurrent protection recovery conditions	Cut load / auto release		
6	Short Protection	Short circuit protection delay time	80µS	100µS	200µS
		Short circuit protection recovery	Short circuit release / auto recovery		
7	Resistance	Discharge circuit internal resistance		10mΩ	20mΩ
8	Temperature	Operating Temperature Range	-20°C		+70°C
		Discharging Temperature Protection	+60°C	+65°C	+70°C
		Protection Effect	Turn off FET		
		Temperature Protection Release Value	+40°C	+48°C	+56°C
9	Dimensions		L 130.0mm x W 180.0mm x T 18.0mm		

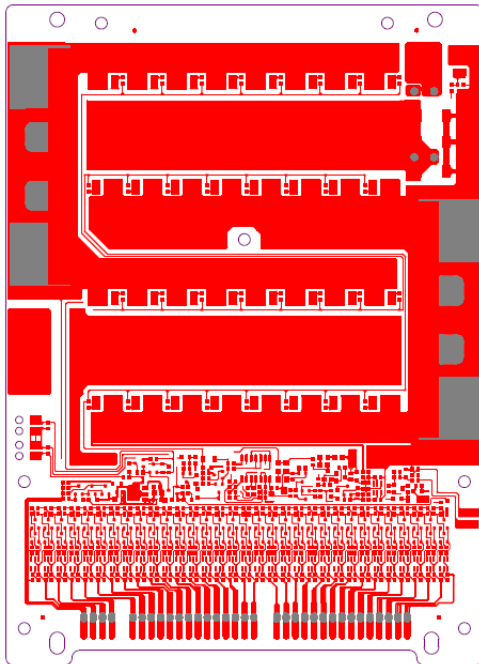
IMAGE



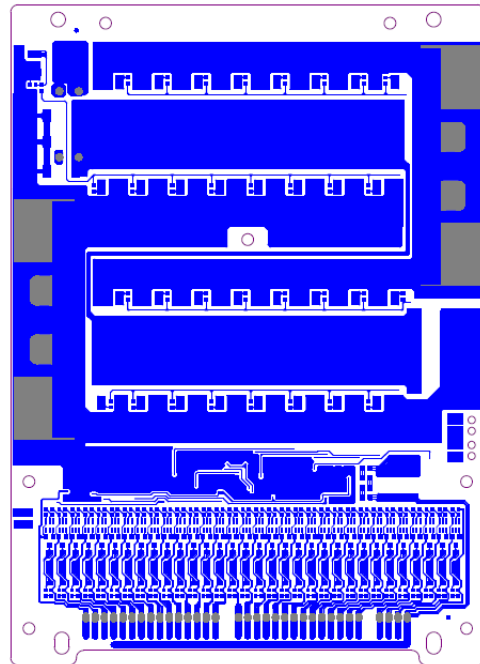


PCM for 12.8/13.2V LiFePO₄ Battery Pack

WIRING DIAGRAM



Top-level wiring diagram



Bottom line diagram

CONNECTION DIAGRAM

