



12V

205W

SLA

UPS
AGM

12SB205WHR-FR

Rechargeable AGM Sealed Lead Acid Battery

SPECIFICATIONS

Nominal Voltage	12V	
Nominal Power	15 min rate	
	205W/cell	to 1.67V/cell
Nominal Capacity		
20 hour rate	(2.75A to 10.50V)	55Ah
8 hour rate	(5.90A to 10.50V)	47.2Ah
5 hour rate	(9.35A to 10.20V)	46.75Ah
Weight	Approx. 17.35kg	
Internal Resistance (at 1KHz)	Approx. 8mΩ	
Maximum Discharge Current (5 secs)	660A	
Short Circuit Current	2775A	
Charge Methods at 25°C		
Maximum Charging Current	16.5A	
Boost Charging Voltage	14.4V to 15.0V	
Boost Charge Time	8-9 hrs	
Float Charging Voltage	13.5V to 13.8V	
Coefficient -3.0mV/°C/Cell		

Operating Temperature Range

Charge	-15°C to 40°C
Discharge	-15°C to 50°C
Storage	-15°C to 40°C

Charge Retention (Shelf Life) at 20°C

1 month	98%
3 months	96%
6 months	94%

Case Material UL94 V-0 Flame Retardant

Termination F8 (M6 Bolt)

Torque Value of Terminal Hardware

Recommended Torque Value	M6: 7 N-m (71kgf-cm)
Max. Allowable Torque Value	M6: 10 N-m (102kgf-cm)

Design Life 6-9 years

Classified as a non-spillable battery.

Approved for transportation by:

- Air (IATA/ICAO provision A67)
- Road
- Sea (per IMDG Special Provision 238)



Barcode

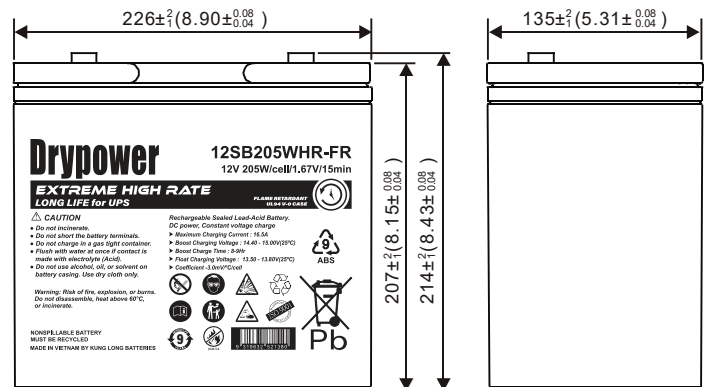
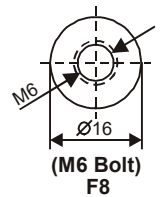
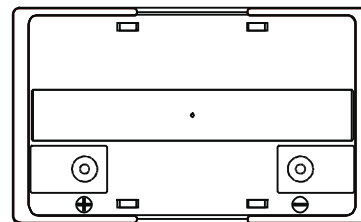


9319632521380



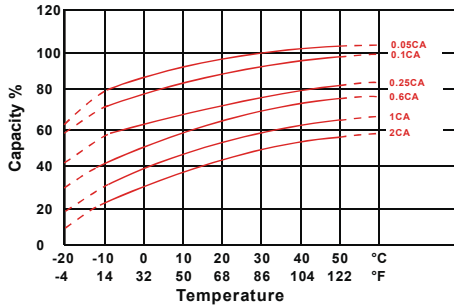
DIMENSIONS

mm (inch)

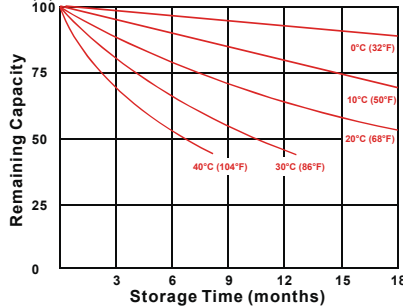


CHARACTERISTICS CHARTS

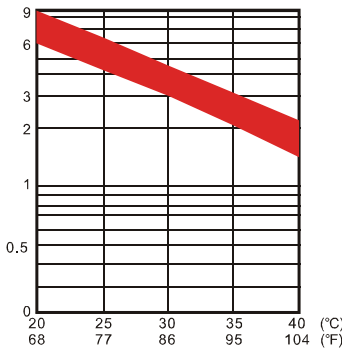
Effect of Temperature on Capacity 25°C (77°F)



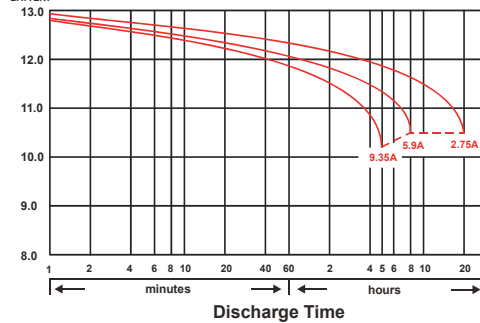
Capacity Retention Characteristic



Trickle (or float) Service Life



Discharge Time VS. Discharge Current (25°C)



FEATURES & BENEFITS

- ◆ Industry leading 99.99% pure lead content for superior service life and dependable performance.
- ◆ Specially formulated solder paste to ensure reliable power delivery.
- ◆ Maintenance free technology and non-spillable design.
- ◆ Special grid frame alloy design with outstanding anti-corrosion performance.
- ◆ Higher percentage of tin content compared with the industry standard. Tin extends battery standby life by minimising sulphation (corrosion) especially at higher temperatures.
- ◆ Manufactured by Kung Long Battery (KLB) at facilities in Taiwan and Vietnam. KLB is a leading manufacturer and complies with relevant international quality standards including ISO9001, CE ETL9000, UL1989, OHSAS18001 and ISO17025. KLB supports Green Sustainable supply chain practices.



PERFORMANCE DATA

Discharge Rates in Watts to Various End Voltages at 25°C (77°F)

End Voltage		1.85V	1.80V	1.75V	1.70V	1.67V	1.65V	1.60V
2	min	334	397	429	454	473	490	504
4	min	309	345	374	399	418	435	449
5	min	300	336	365	390	414	431	445
6	min	276	302	324	343	358	373	388
8	min	261	283	301	318	333	348	363
10	min	221	246	266	284	298	305	311
15	min	196	211	222	225	228	231	233
20	min	169	177	182	186	189	192	195
30	min	119	124	128	131	135	138	140
45	min	93.1	96	98	98.9	99.6	100	101
60	min	65	67.4	69.6	71.6	72.1	72.4	72.6
90	min	51.1	53	54.5	55.2	55.7	56.1	56.4
120	min	33.3	35.5	37.1	37.7	38.3	38.7	39.1
180	min	26.8	28.7	29.7	30.2	30.6	30.9	31.2
240	min	21.9	22.9	23.8	24.2	24.5	24.7	24.9
300	min	18.4	19.3	20.1	20.3	20.5	20.7	20.9
480	min	10.7	11.1	11.5	11.6	11.8	12	12.1
1200	min	5.51	5.75	5.96	6.04	6.09	6.14	6.19

Discharge Rates in Amperes to Various End Voltages at 25°C (77°F)

End Voltage		1.85V	1.80V	1.75V	1.70V	1.67V	1.65V	1.60V
2	min	183	232	259	275	289	301	310
4	min	177	207	226	242	256	269	277
5	min	158	182	196	209	218	226	231
6	min	139	162	173	187	199	209	216
8	min	128	147	159	163	167	171	174
10	min	117	136	147	152	158	162	164
15	min	91.3	101	105	110	114	116	118
20	min	77.60	85.8	89.6	93.6	96.9	98.6	100
30	min	57.9	63.1	65.7	67.4	69.2	70.7	71.6
45	min	46.7	47.6	48.2	48.9	49.5	50	50.4
60	min	29.2	32.5	34.3	34.9	35.4	35.8	36.2
90	min	23.1	24.7	25.4	26	26.5	26.9	27
120	min	16.8	18.1	19.1	19.5	19.9	20.2	20.4
180	min	12.7	13.5	14	14.3	14.5	14.7	14.9
240	min	10.8	11.2	11.6	11.8	12	12.2	12.4
300	min	8.95	9.34	9.53	9.64	9.8	9.89	10
480	min	5.3	5.41	5.51	5.56	5.62	5.68	5.73
1200	min	2.74	2.78	2.81	2.84	2.88	2.91	2.94

All data on the spec. sheet is an average value:

The tolerance range : X < 6min (+15%~-15%), 6min ≤ X < 10min (+12%~-12%), 10min ≤ X < 60min (+8%~-8%), X ≥ 60min (+5%~-5%)

Performance may vary depending on application. All specifications are correct at time of creation. All specifications and operation conditions contained in this datasheet are subject to change or improvement without prior notice to the user. This data is for evaluation purposes only. No guarantee is intended or implied by this data. For clarification and updated information, please contact us. Dec2023