

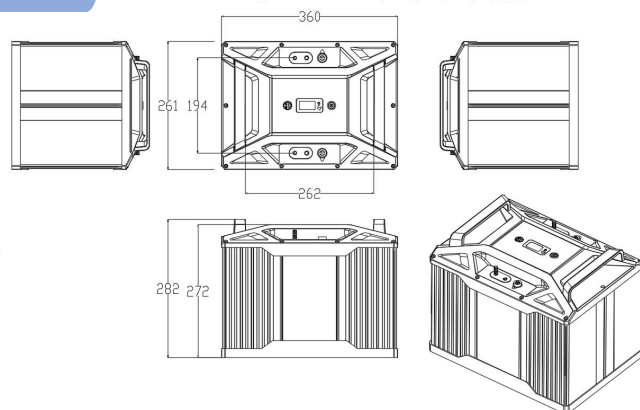
Quick Installation Manual

VLEG 3276C 51.2V64Ah LiFePO4 Battery System V1.0

Caution

- ⚠ DO NOT reverse positive and negative terminals.
- ⚠ DO NOT use the battery when it is hot, bulges, deforms or leaks.
- ⚠ DO NOT using batteries from different manufacturers or different kinds, types together, and do not mix old batteries and new batteries.

Size



Replacement tool



Multi-meter



Protective gloves



Cross screwdriver

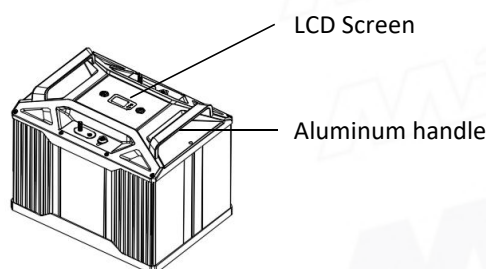
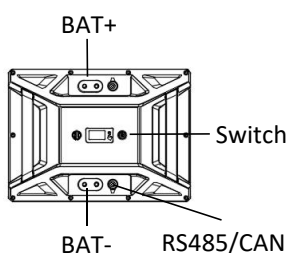
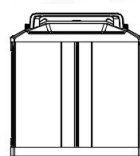
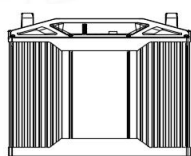


Electric batch

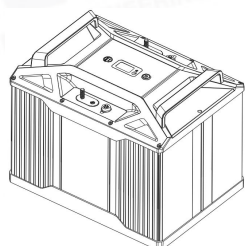


Socket wrench

Interface



Check



①



④



②



⑤



③



⑥



⑦

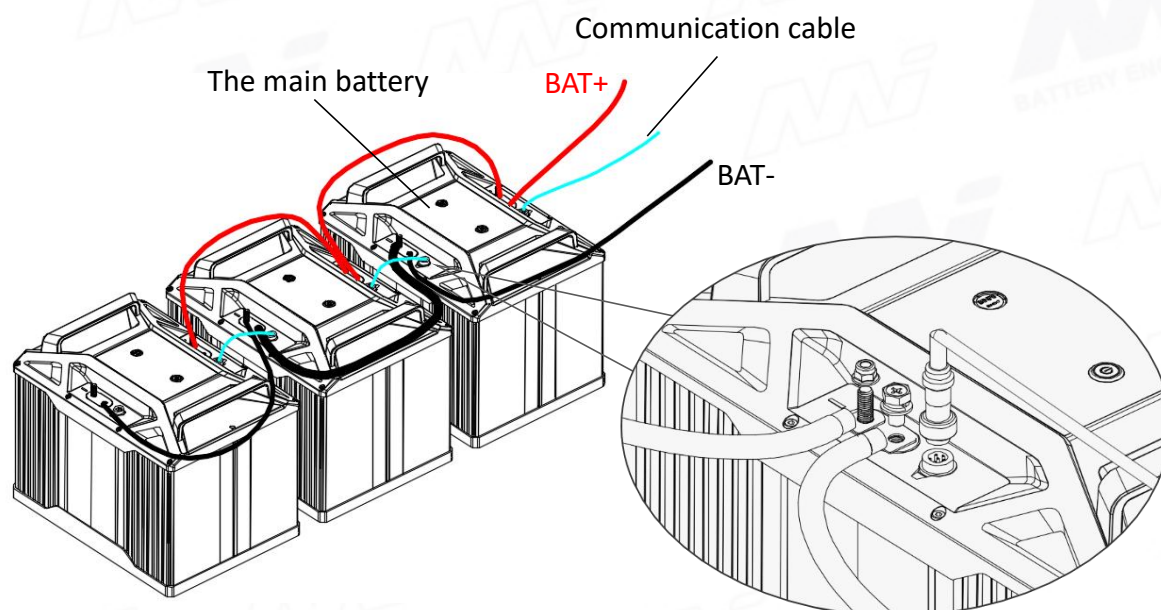
- ① Battery Module × 1
- ② Power cable (Red) × 1
- ③ Power cable (Black) × 1
- ④ User manual × 1
- ⑤ Communication cable × 1
- ⑥ M8 Hexagon screw × 2
- ⑦ Hexagon flange nuts × 2

Wiring diagram

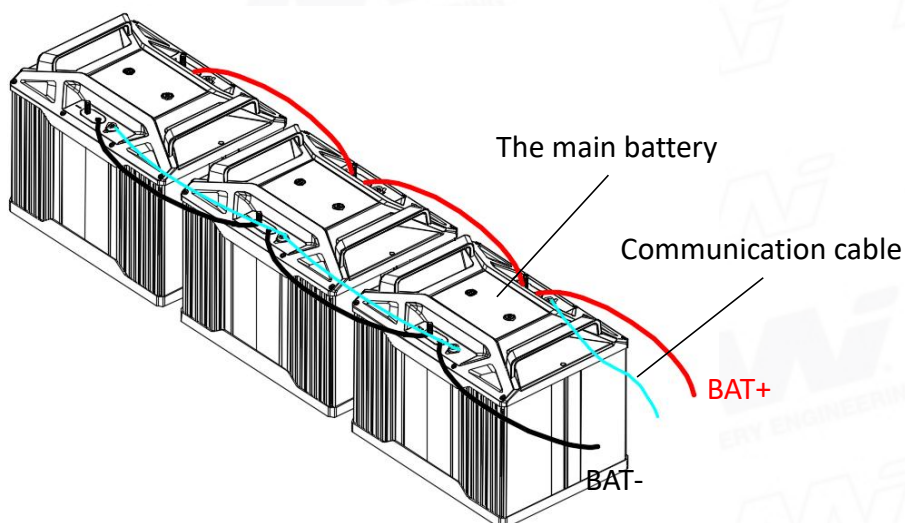
The battery supports up to 16 sets for parallel use, and one of the batteries serves as the main battery for total power output and communication with external devices.

1. Power cable connection: Connect the positive and negative terminals of the battery in sequence, and output the total positive and total negative from the main battery.
2. Communication cable connection: The battery communication interface is sequentially connected, leading out from the main battery to communicate with external devices.

Connection method:



Connection method(Optional):



APP settings

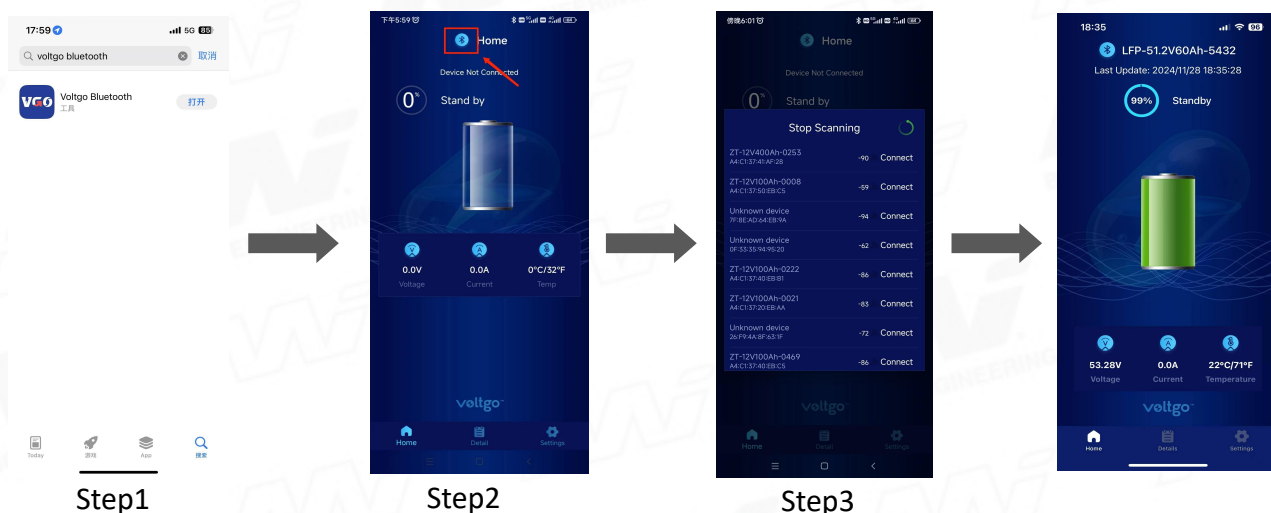
The battery can be connected to the APP through Bluetooth. After the APP is successfully connected, the battery information can be viewed. It also supports battery ID Settings.

APP usage steps:

Step1. Download the APP named BatteryMonitorBL

Step2. Open the APP and enter the homepage

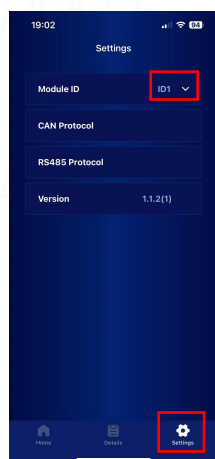
Step3. Search for the battery ID, select and connect successfully, the real-time data will be displayed



Set the battery ID on the Settings page:

When multiple batteries are connected in parallel, set the ID of the main battery to 1, and the other batteries are set to ID2, ID3, ID4... ID16 in order of connection.

Restart the battery to take effect.



Attention:

1. Before connecting the APP, the battery should be turned on.
2. After setting the battery ID, restart the battery to take effect.