



PCM for 3.2V LiFePO4 Battery Pack

SPECIFICATIONS

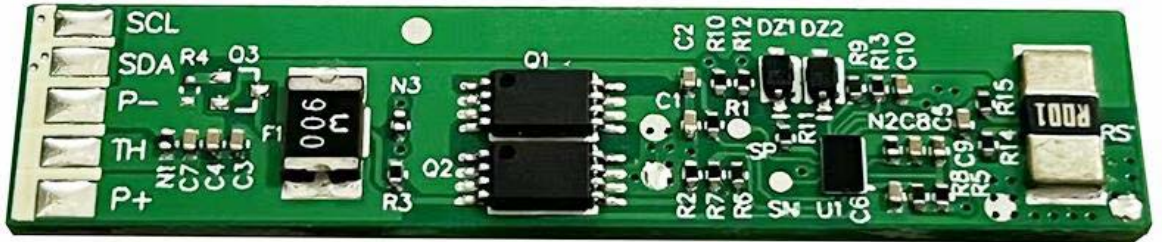
No.	Test Item	Criterion	
1	BMS Chip	BQ27Z746	
2	Voltage	Charging voltage 3.600V±0.050V	
3	Current	Maximal continuous Charging current	5A
		Maximal continuous Discharging current	5A
		Current consumption: operating mode	≤200µA
		Current consumption: sleep mode	≤50µA
4	Over Charge Protection	Over charge detection voltage	3.650V±0.025V
		Over charge detection delay time	500ms—3000ms
		Over charge release voltage	3.450V±0.050V
5	Over Discharge Protection	Over discharge detection voltage	2.500V±0.050V
		Over discharge detection delay time	500ms—3000ms
		Over discharge release voltage	3.000V±0.050V
6	Over Current Protection	Over current discharge	9.0A±2.0A
		Detection delay time	1000ms—3000ms
		Over current charge	9.0A±2.0A
		Detection delay time	1000ms—3000ms
7	Temperature Protection	Over Temp during Charge (OTC)	70°C±4°C
		Over Temp Release	55°C±4°C
		Over Temp during Discharge (OTD)	70°C±4°C
		Over Temp Release	55°C±4°C
		Under Temp during Charge (UTC)	-5°C±4°C
		Under Temp Release	0°C±4°C
		Under Temp during Discharge (UTD)	-25°C±4°C
		Under Temp Release	-15°C±4°C
8	Short Protection	Detection delay time	300-800µs
		Release condition	Disconnect load
9	Resistance	Protection circuitry	≤50mΩ
10	Dimensions	L 49mm x W 11mm x T 2mm	





PCM for 3.2V LiFePO4 Battery Pack

IMAGE



CONNECTION DIAGRAM

