

Drypower
Rechargeable Lithium LiFePO4



victron energy
BLUE POWER



Drypower Rechargeable Lithium Batteries with **Bluetooth Monitoring**



Regardless of the application, did you know you can monitor your Drypower lithium battery with the simple addition of a **Victron Energy SmartShunt**.

Utilising the many features provided with the VictronConnect app, system parameters such as state of charge, consumed capacity and estimated runtime are all in the palm of your hand.

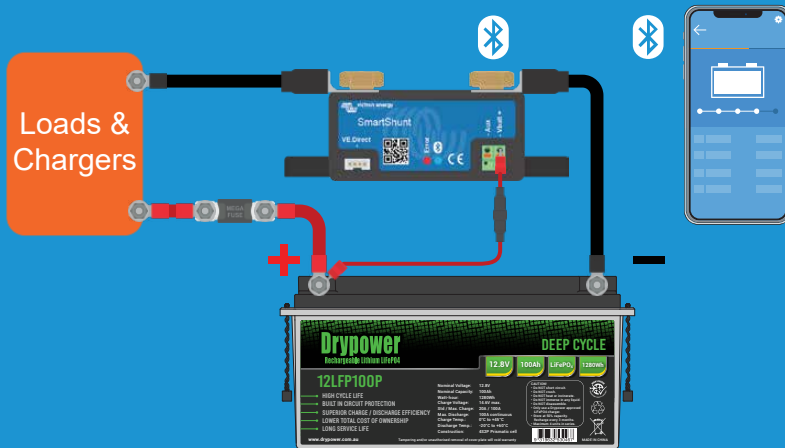
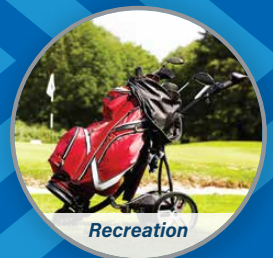




Why the Victron Energy SmartShunt?

Features & benefits:

- Provides real time state of charge (SOC), voltage, current, consumed capacity and estimated run time available, with user settable alarms.
- World renowned VictronConnect App provides an all-in-one control and monitoring hub for all Victron Energy devices in your system - all in the palm of your hand.
- Quickly access usage & charge history & identify trends to ensure optimum battery performance to prolong service life.
- Allows you to place the battery in less accessible areas.
- Compatible with all Bluetooth enabled Victron Energy products.
- Tailorable to suit 12V-48V systems with customisable settings.
- The SmartShunt emits extremely low parasitic load on the battery compared to batteries with Bluetooth built-in (less than 1mV).
- As Bluetooth is influenced by interference, the SmartShunt can be positioned away from the battery, or extend its range by adding the Bluetooth Smart Dongle.



Easy installation and suitable for many applications:



SmartShunt IP22 / IP65	500A / 1000A / 2000A
Supply voltage range	6.5 - 70 VDC
Current draw	< 1mA
Input voltage range, auxiliary battery	6.5 - 70 VDC
Battery capacity (Ah)	1 - 9999 Ah
Operating temperature range	-40 +50°C (-40 - 120°F)
Measures voltage of second battery, or temperature, or midpoint	Yes
Temperature measurement range	-20 +50°C
VE.Direct communication port	Yes