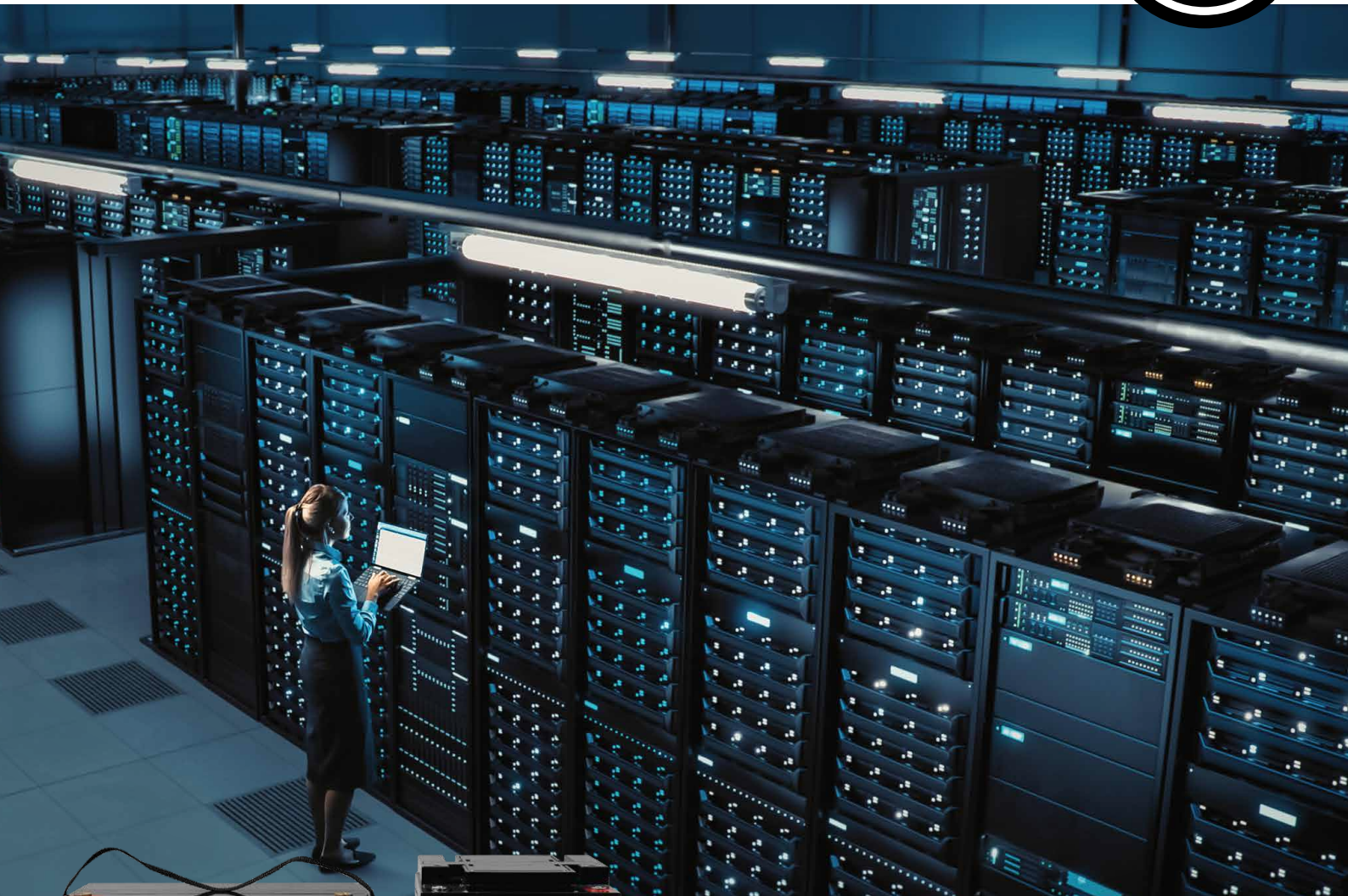


Drypower Batteries

**EXTREME HIGH RATE
LONG LIFE for UPS**



Drypower EXTREME High Rate Long Life batteries have been designed to deliver superior power for critical infrastructure and backup systems.

The specially formulated solder paste and advanced grid alloy plate construction, combine to provide increased power, to ultimately ensure optimum performance when you need it.



EXPERIENCE IN LEAD ACID BATTERIES
www.drypower.com.au



EXTREME HIGH RATE LONG LIFE for UPS

Suitable for backup systems in:

- UPS
- Network Comms & Data centre
- Fire Alarm / Emergency
- Hospital & Medical Centre
- Large Security Infrastructure

- Improved internal grid structure for improved energy density and a more stable performance wherever high power & short-term backup discharge is required.
- Industry leading 99.99% pure lead content for superior service life and dependable performance.
- 9-12 year design life with exceptional low self-discharge characteristics.
- Extreme energy density, small footprint, increased power (15-20% above standard high rate batteries).

Range Specifications

Model No.	Specifications		Dimensions				Weight (kg)	Terminal Type	Case Type	Design Life (Years)	Carton / Pallet Qty
	Volts (V)	Watt/cell @10min	W mm	D mm	H mm	HT (w/Term) (mm)					
EXTREME HIGH RATE LONG LIFE UPS RANGE											
FLAME RETARDANT CASE											
12SB80WHR-FR	12	80W	181	76	167	167	6.60	F6	UL94 V-0	6-9	2 / 150
12SB100WHR-FR	12	100W	166	125.5	165	176	9.60	F6	UL94 V-0	6-9	2 / 128
12SB135WHR-FR	12	135W	197	131	159	168	11.15	F8	UL94 V-0	6-9	1 / 96
12SB150WHR-FR	12	150W	197.7	166	154	171	13.32	F8	UL94 V-0	6-9	1 / 75
12SB205WHR-FR	12	205W	226	135	207	214	17.35	F8	UL94 V-0	6-9	1 / 52
12SB245WHR-FR	12	245W	350	167	179	179	20.50	F8	UL94 V-0	10-12	1 / 36
12SB300WHR-FR	12	300W	260	170	202	207	25.00	F8	UL94 V-0	10-12	1 / 32
12SB365WHR-FR	12	365W	306	168	206	213	29.50	F8	UL94 V-0	10-12	1 / 32
12SB505WHR-FR	12	505W	338	173	276	281	42.30	F8	UL94 V-0	10-12	1 / 24
12SB550WHR-FR	12	550W	338	173	276	281	45.50	F8	UL94 V-0	10-12	1 / 24
12SB820WHR-FR	12	820W	522	238	219	224	66.40	F18	UL94 V-0	10-12	1 / 8

TERMINAL TYPE

F6 (M5 Bolt)

F8 (M6 Bolt)

F18 (M8 Bolt)

Performance may vary depending on application. All specifications are correct at time of creation. All specifications and operation conditions contained herein are subject to change or improvement without prior notice to the user. This data is for evaluation purposes only. No guarantee is intended or implied by this data. For clarification and updated information, please contact us • Jan2024_Rev1

FOR MORE INFORMATION: Please refer to our website www.drypower.com.au for more comprehensive information, datasheet downloads, terminal type guide, product catalogues, compatible battery charger options, etc.



Manufactured in VIETNAM or TAIWAN

Compare the Drypower Range

Application	Backup & Main Power Range	Cyclic Range	Dual Purpose AGM Range	High Rate UPS Range	EXTREME High Rate Long Life UPS Range	Standby Long Life Range (incl. Front Terminal type)	Solar Power Range	Hybrid Gel Range	Pure Gel Range	Rechargeable Lithium Range
General Electrics / Toys	☼	☼					☼	GEL		☼
UPS & Data Security	☼			☼	☼	☼			☼	
Security / Fire Alarm	☼			☼	☼	☼				
Data Centres / Base Stations				☼	☼	☼				
Emergency Lighting	☼					☼				
Medical Equipment	☼	☼				☼		GEL	☼	☼
Mobility / Wheelchair / AGV		☼						GEL	☼	☼
Golf Cart / Buggy		☼	☼					GEL	☼	☼
Wind Power		☼					☼	GEL	☼	☼
4x4/RV/Marine Starting			☼							
4x4/RV/Marine Storage		☼	☼				☼	GEL	☼	☼
Deep Cycle Applications		☼	☼				☼	GEL	☼	☼
Telecommunications / Data				☼	☼	☼		GEL	☼	☼
Off Grid Solar		☼	☼				☼	GEL	☼	☼
Utilities / Infrastructure	☼	☼	☼		☼	☼	☼	GEL	☼	☼
Industrial Machinery		☼	☼					GEL	☼	☼

This chart is to be used as a guide only. Specific application requirements may need to be considered. If unsure, please contact us.



Master Instruments Pty Ltd
www.master-instruments.com.au
sales@master-instruments.com.au

