



# ENEPOWER

Enepower's Lithium Ion IP67 rated battery solutions are the perfect external power source for a variety of applications such as bike lights & remote surveillance equipment.

### About the Enepower LIBM-BLX lithium battery series

The universal LIBM-BLX series provides a compact, rugged and portable Lithium Ion battery capable of dealing with the elements.

Compact enough to power your bike lights, and rugged enough for long term deployment in remote applications such as motion sensor driven wildlife traps & surveillance.

### A range of voltages to suit different needs

Available in 7.2V, 10.8V and 14.4V models to provide the required power for a range of devices.

These batteries provide up to 5A maximum continuous discharge.

The LIBM-BLX range features LED status indicators so you know when to recharge.



Fitted with universally compatible 2.1mm DC jack output.

All models have PCM protection built in to protect both the battery and the device they're fitted in against over charge, over discharge and short circuit protection.

The LIBM-BLX range is also **UN38.3 certified** as safe for transport by air, perfect as a power source for travellers and jet-setting professionals.

While these batteries are protected in wet environments, including rain, please do not submerge in water for extended periods. Ensure the voltages are suitable for your device before installing the battery.



### Enepower Rechargeable Lithium: Ruggedised IP67 batteries for the outdoor life



Long strain relief on output cable for durability



LED State of Charge (SoC) indicators



Lightweight, compact and portable



Wide operating temperature range for most conditions



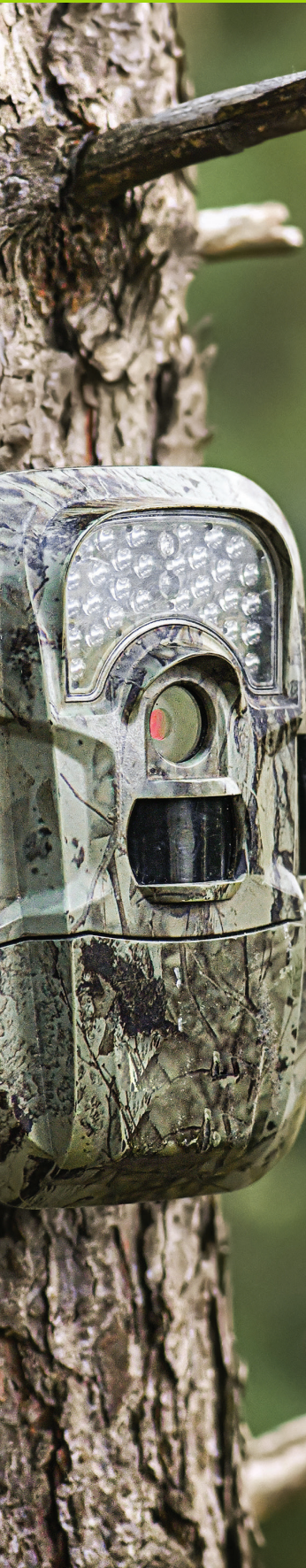
Robust case for outdoor use



BMS protection to ensure safe operation

### Models in the range

- LIBM-BLX402/L — 7.2V 5.8Ah 42Wh Lilon (2S2P)
- LIBM-BLX301 — 10.8V 3.3Ah 36Wh Lilon (3S1P)
- LIBM-BLX404 — 14.4V 3.45Ah 50Wh Lilon (4S1P)



## LIBM-BLX Lithium IP67 Battery Range

### Range Specifications

				
Model Number	<b>LIBM-BLX402</b>	<b>LIBM-BLX402L</b>	<b>LIBM-BLX301</b>	<b>LIBM-BLX404</b>
Chemistry	Lithium Ion (Lilon)	Lithium Ion (Lilon)	Lithium Ion (Lilon)	Lithium Ion (Lilon)
Voltage	7.2V	7.2V	10.8V	14.4V
Battery Capacity	5.8Ah	5.8Ah	3.3Ah	3.45Ah
Watt Hour	41.76Wh	41.76Wh	35.64Wh	49.68Wh
Max Continuous Charge Current	1.6A	1.6A	1A	1.6A
Max Continuous Discharge Current	<5A	<5A	<5A	<5A
Max Instant Discharging Current			7A/1s	
Connector	2.1mm DC Jack	5-pin M8-5P (Female)	2.1mm DC Jack	2.1mm DC Jack
Cells Used Inside	Panasonic NCR18650PF		Panasonic NCR18650GA	
Configuration	2S2P	2S2P	3S1P	4S1P
Communication Interface	N/A	SMBus	N/A	N/A
Connection	No series or parallel connection allowed			
Case Material	Plastic Sabcic 6600			
Dimensions (W x D x H)	42.25 x 95 x 44.8mm ± 0.4mm			
Weight	250g ± 50g			
Temperature	Charging	0°C to 40°C		
	Discharging	-20°C to 60°C		
Protection	Over charge, over discharge, over current, over temperature, short protection			
IP Rating	IP67			
Certification	UN38.3			

All specifications are correct at time of creation. All specifications and operation conditions are subject to change or improvement without prior notice to the user.



For suitable chargers, visit our website.

