

MyNoark+ App User Manual

2025.07

Table of Contents

1 Account Management.....	3
2 Site Management	5
3 Device Management	8
4 Noark Intelligence	11
Appendix – Wi-Fi Setup Guide	13

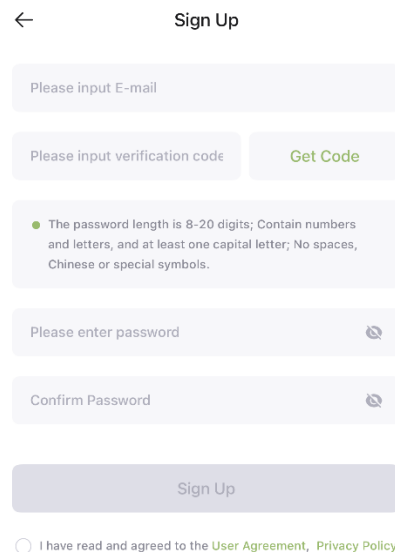
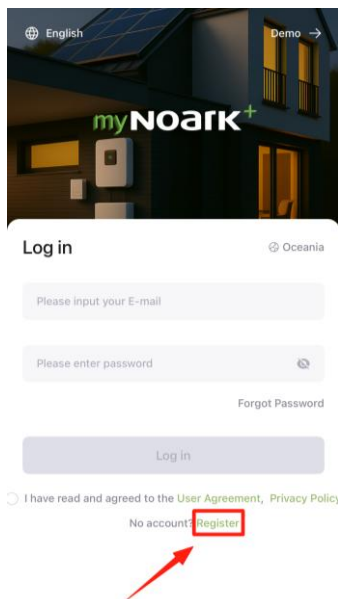
1 Account Management

1.1 Registration

Scan below QR code to download **myNoark+** app from Google Play Store, Apple Store or local download.



On the login screen, select '**Register**' to proceed to the registration page. Provide a valid email address to receive the verification code. Once you have filled in the required registration details, create a secure password. To proceed, review the user agreement, tick the checkbox to confirm your acceptance, and then click '**read and agreed**' to complete the process.

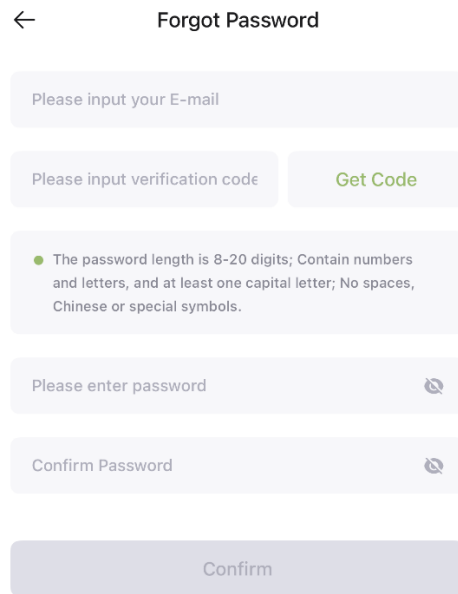
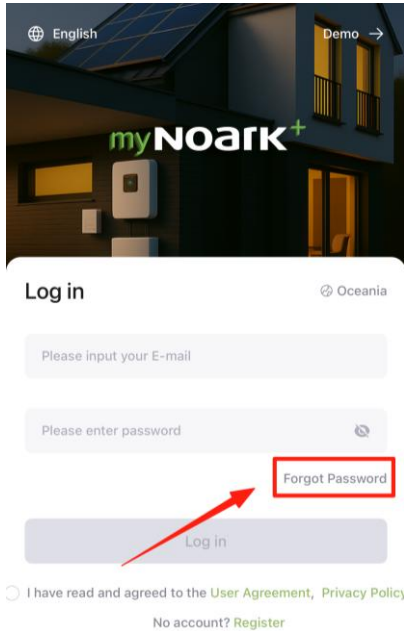


1.2 Requesting user level access change

If you are an installer and have already created an account on the myNoark+ platform, your account may initially be set to a basic user level with limited access. To request elevated permissions—such as the ability to modify system parameters, perform remote inverter upgrades, and access additional installer functions—please contact us at **support@noark.au** to apply for installer access.

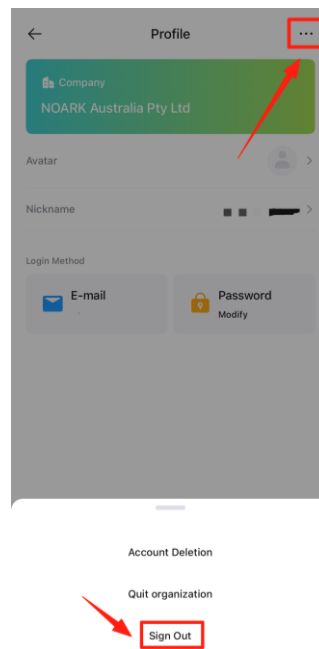
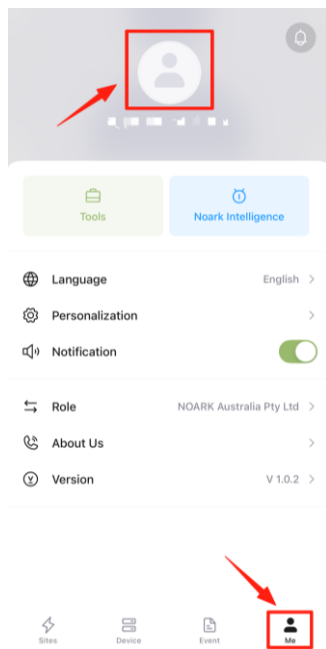
1.3 Forgot Password

Tap **'Forgot password'** at lower right corner on the Login page to access the Password Recovery page. Enter your e-mail address to receive the verification code. Then, enter the verification code, choose your new password, and click **'Confirm'** to set the new password.



1.4 Log Out

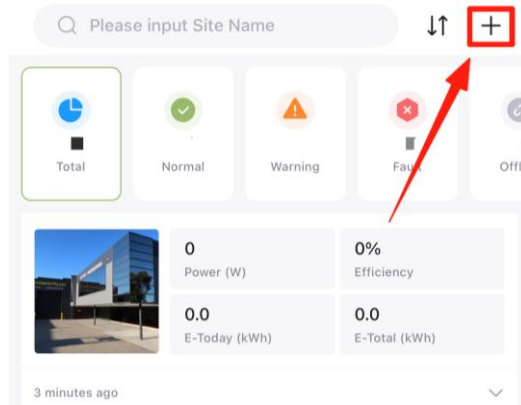
If you wish to log out from current account, go to **Me** Page and tap Avatar to enter user profile page. Tap the three dots on top right corner and select **Sign Out**.



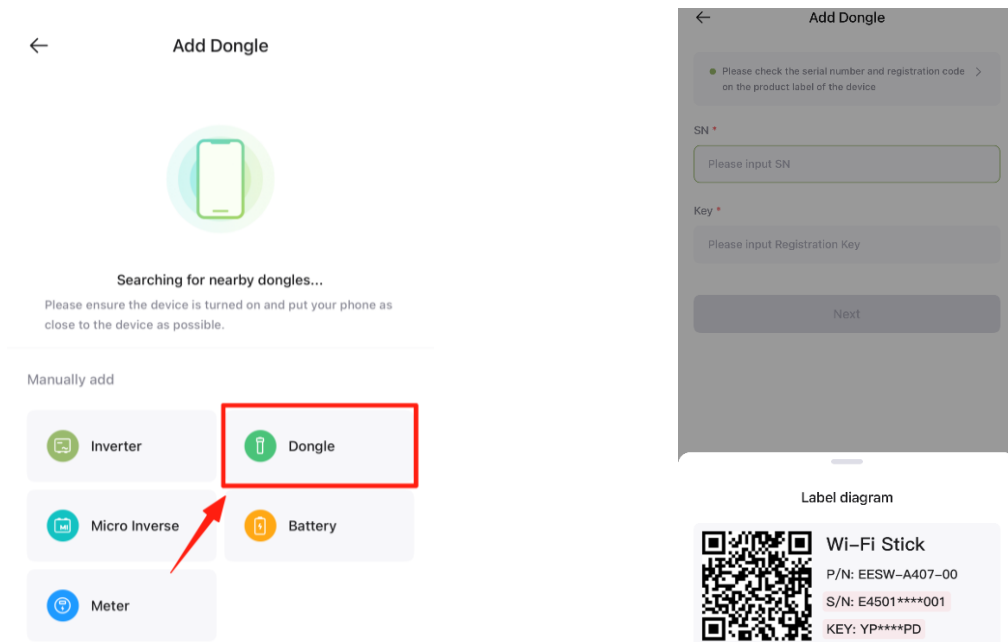
2 Site Management

2.1 Creating a site

- a) At the home page, tap the add button – ‘+’ from the top right corner.



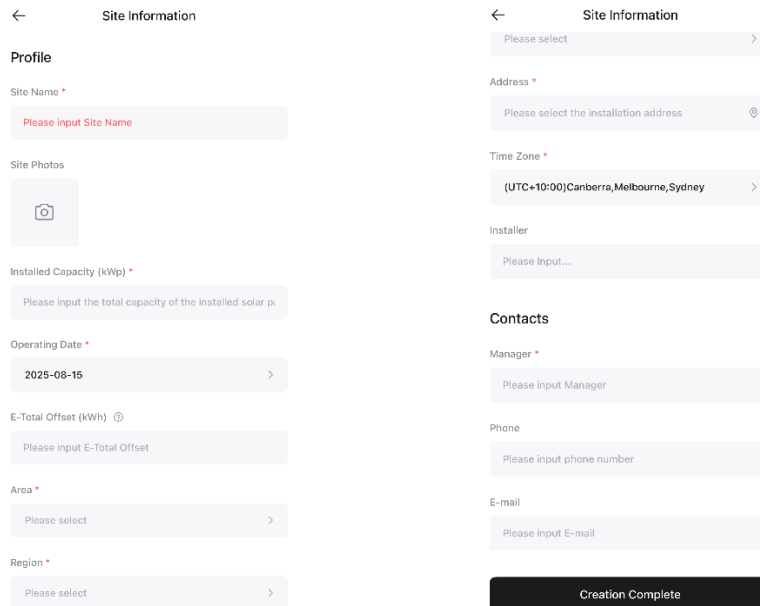
- b) If the Wi-Fi dongle is firmly inserted into the inverter and the power is on, you can place your smartphone close to the dongle to add it automatically. Alternatively, you can add it manually by entering the **SN** and **KEY** from the dongle label, then tapping **Next**.



- c) Enter site name, total capacity kWp, cumulative power generation offset, correct commissioning date for warranty registration of the inverter.
Enter Area, Region and address based on the actual installation.
Check if the time zone is correct. If not, please change it.

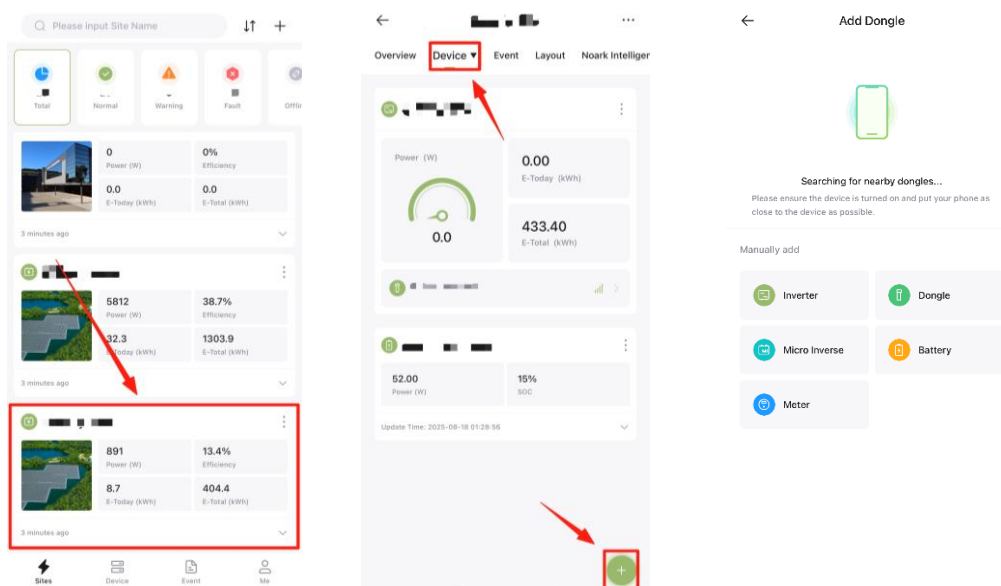
Enter the name of the user who is going to manage the system, their phone number, and e-mail.

Finally tap ‘**Creation Complete**’ to finish site creation.



2.2 Adding a Device to Existing Site

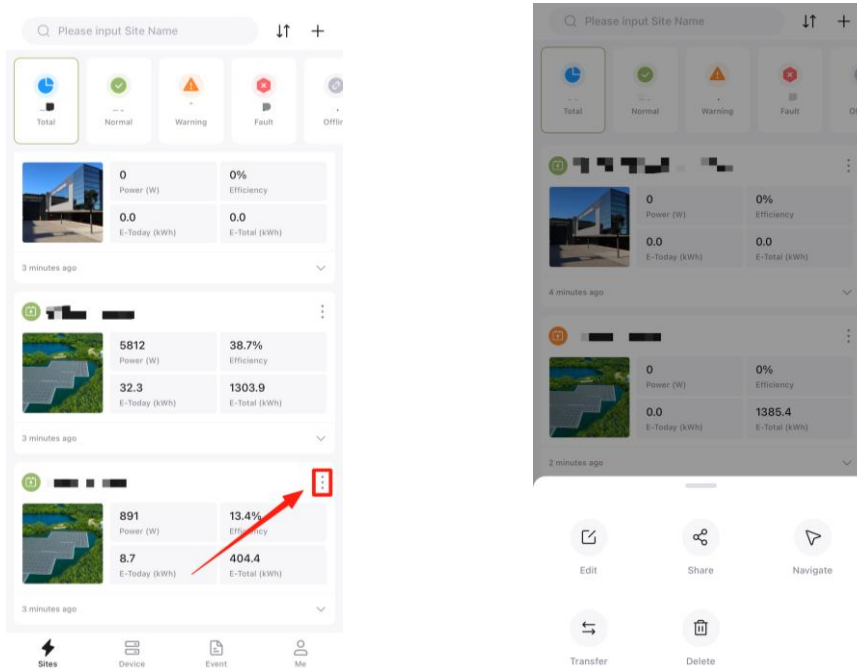
From the Home page, select the site where you want to add more devices and tap it to open the Site Overview page. Next, tap **Device** to access the device list. At the bottom-right corner, tap the **“+” Add** button to add another device. Then, follow the same steps described in **2.1.b** to complete the process.



2.3 Editing, Sharing, Transferring, and Deleting a Site

If you want to manage a site, for example, edit site info, share or transfer the site to another user, delete the site from the platform, simply tap the three dots located on the site card and follow the instructions.

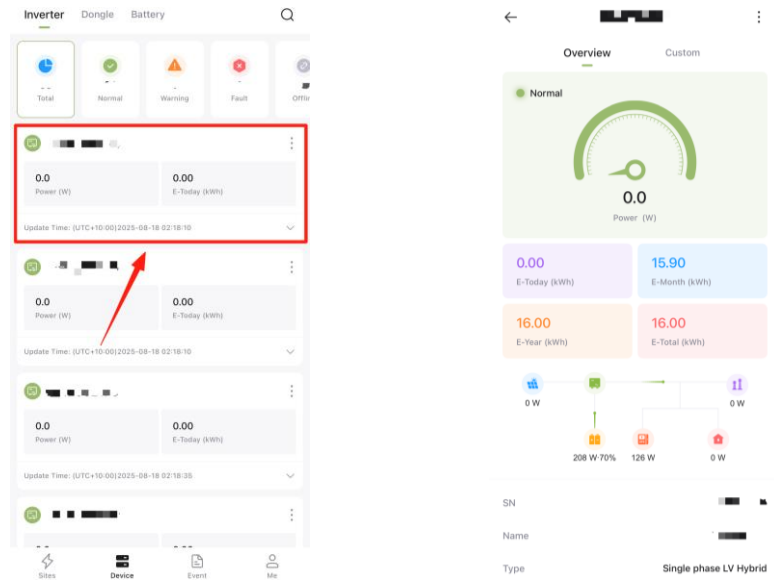
**Note: a) You will lose all the data associated with this site after deleting.
b) When transferring a site to another user, this will remove the ownership from you, and you will no longer be able to access that site.**



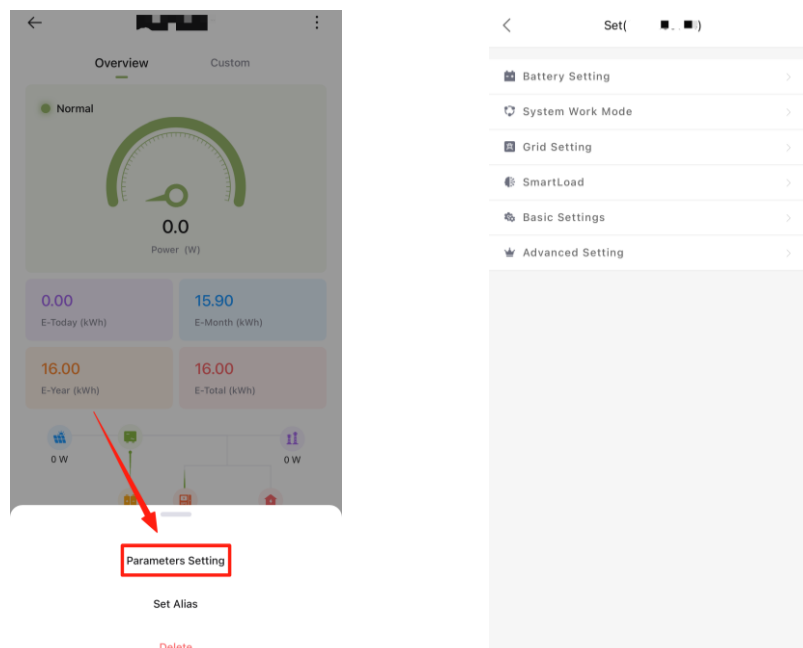
3 Device Management

3.1 Inverter List

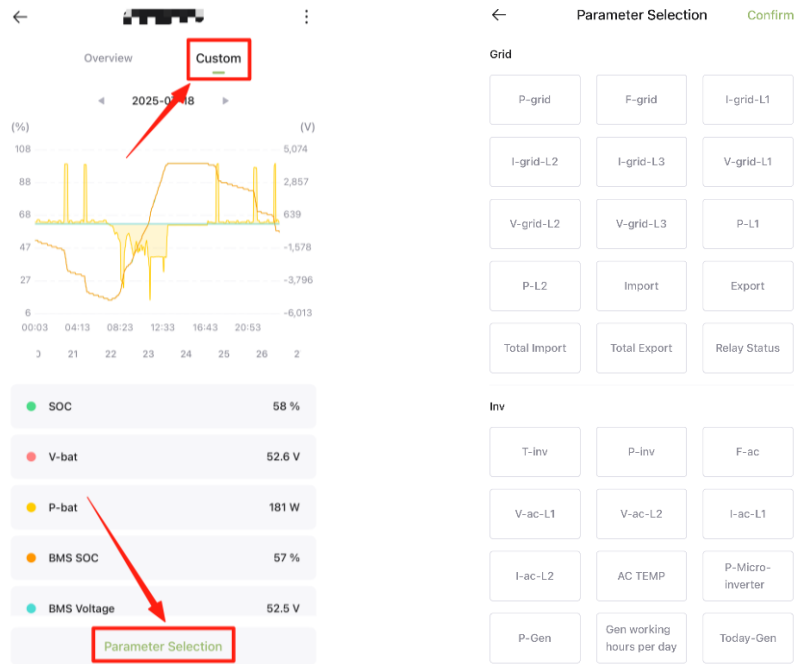
- a) From the Inverter List, tap the card of the inverter you want to view to open its Detail Page. On this page, you can check the real-time data and other key information about the selected inverter.



- b) To change settings remotely, you can either access by tapping three dots on device card or inverter detail page.

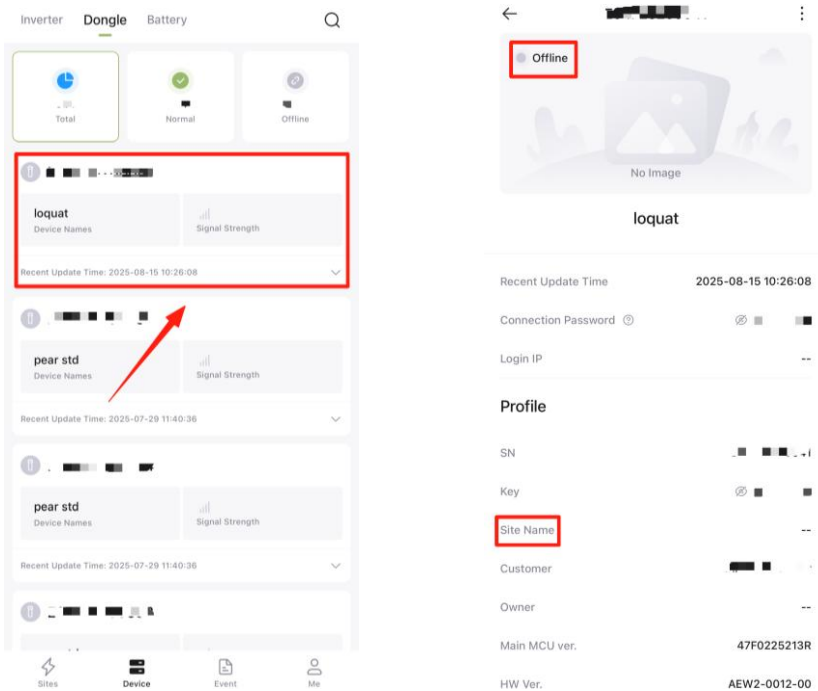


c) You can also view inverter history data using custom function. Simply choose the parameters and date you wish to view.



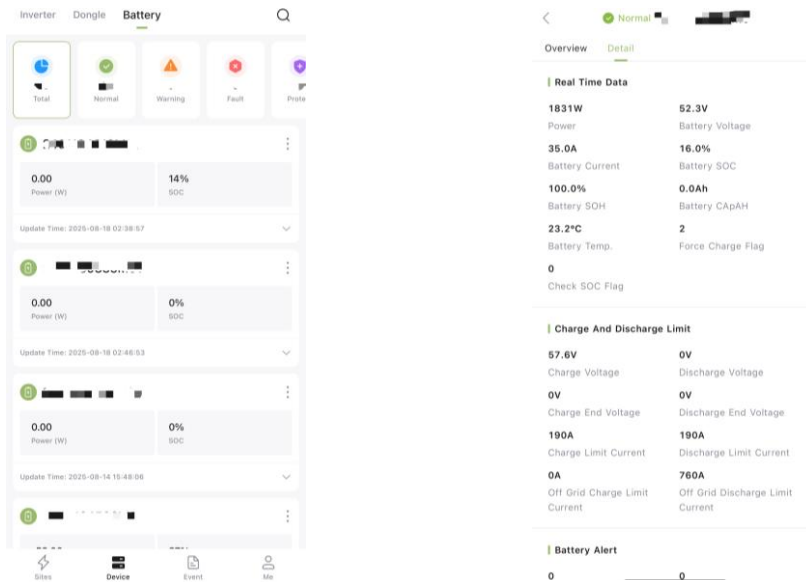
3.2 Dongle List

From the dongle list, you can tap dongle card to view its detail page, such as linked site name, dongle status, etc.



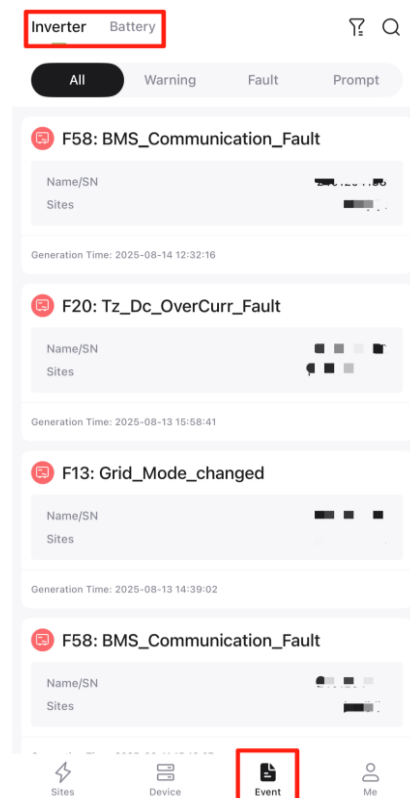
3.3 Battery List

To view battery detail information, tap battery card from battery list. It would display real time data collected from battery side.



3.4 Event Log

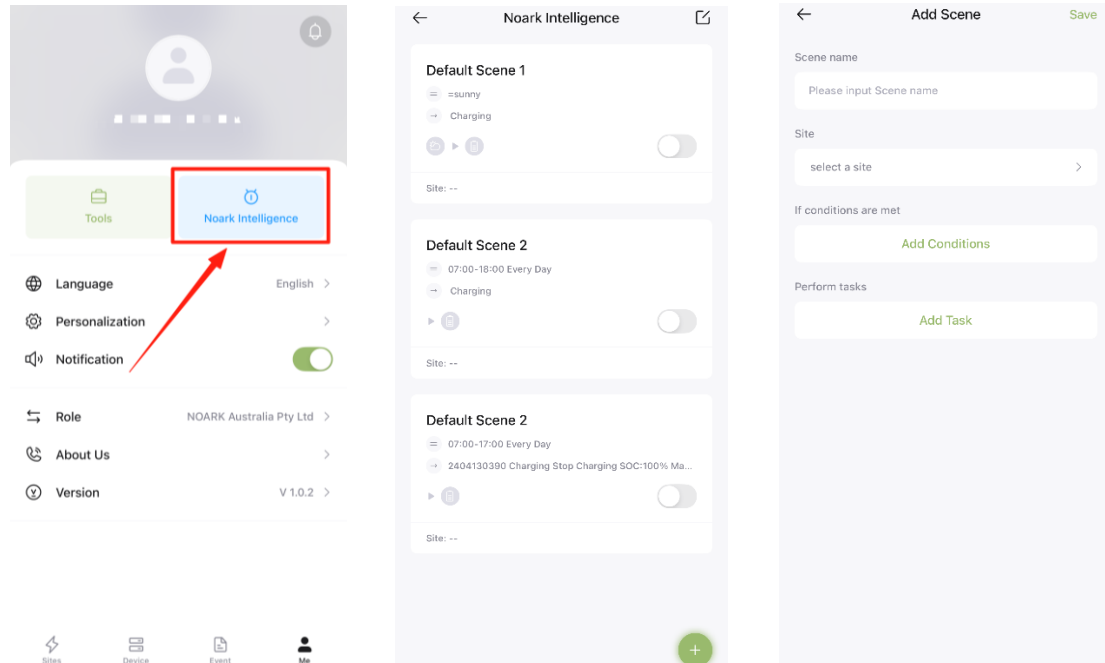
Go to Event page, select the Inverter or battery to view the site plant abnormal information, as shown in the figure below.



4 Noark Intelligence

4.1 Noark Intelligence

At Me page or site overview page, tap **Noark Intelligence**, then add the scene to automate the performance of the inverter and battery as shown in the figure below.



NEED ANY FURTHER HELP?

Please contact us through the following methods:

Noark Australia Pty Ltd

 **Noark Australia**


 **noarkau**

 **Noark Australia Pty Ltd**

 **Noark Australia**

 **Address:** Warehouse 1 10-12 Fairford Road Padstow NSW 2211 Australia

 **Email:** support@noark.au

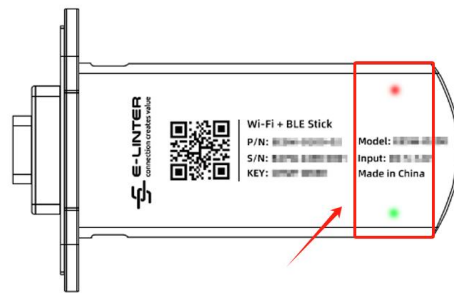
 **Phone:** 1300 771 739

Appendix – Wi-Fi Setup Guide

This is a quick guide to connect your solar system to myNoark+ energy management system via App.

Before proceeding with this document, please ensure the following conditions are met:

- The Wi-Fi dongle is firmly inserted into the Wi-Fi/RS232 interface located at the bottom of the inverter. Confirm that the dongle is powered on— a red light will remain on or flash, and a green light will turn on for 3 seconds to indicate it is receiving power. If these indicators do not appear, please check the connected device.



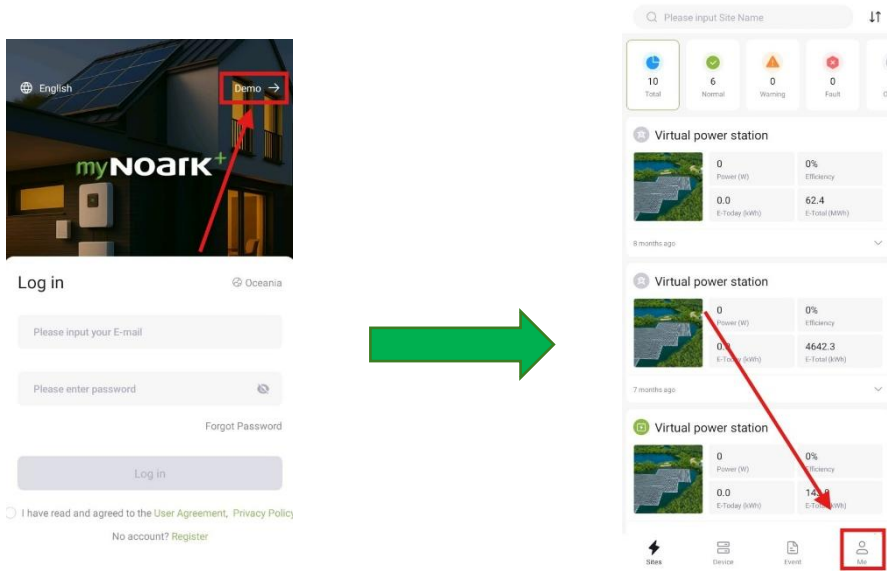
- Ensure Wi-Fi router is connected to Internet. Wi-Fi SSID and password are ready.

Instructions

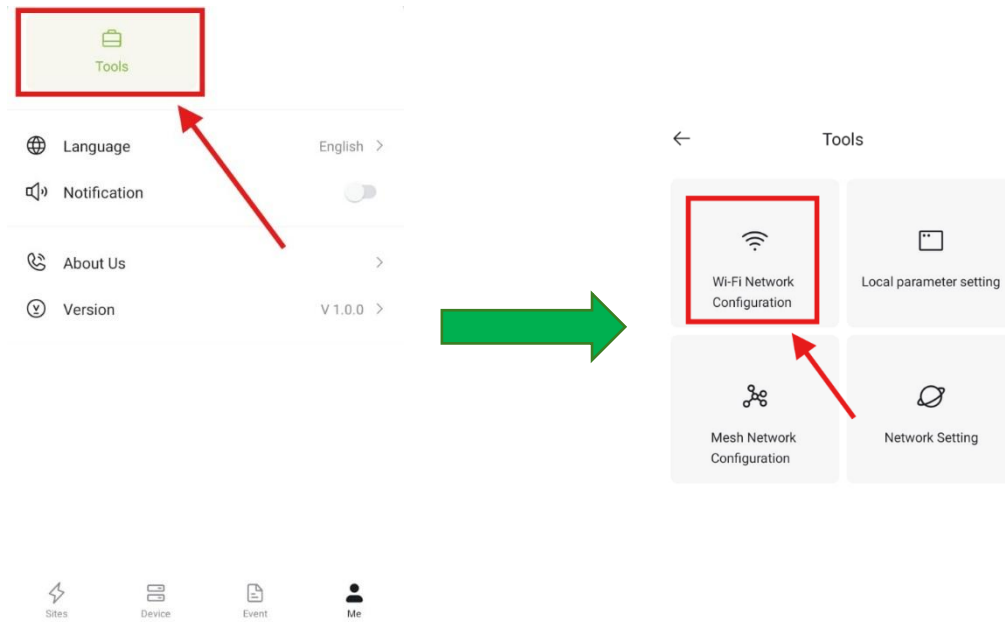
Step 1: Scan below QR code to download **myNoark+** app from Google Play Store, Apple Store or local download.



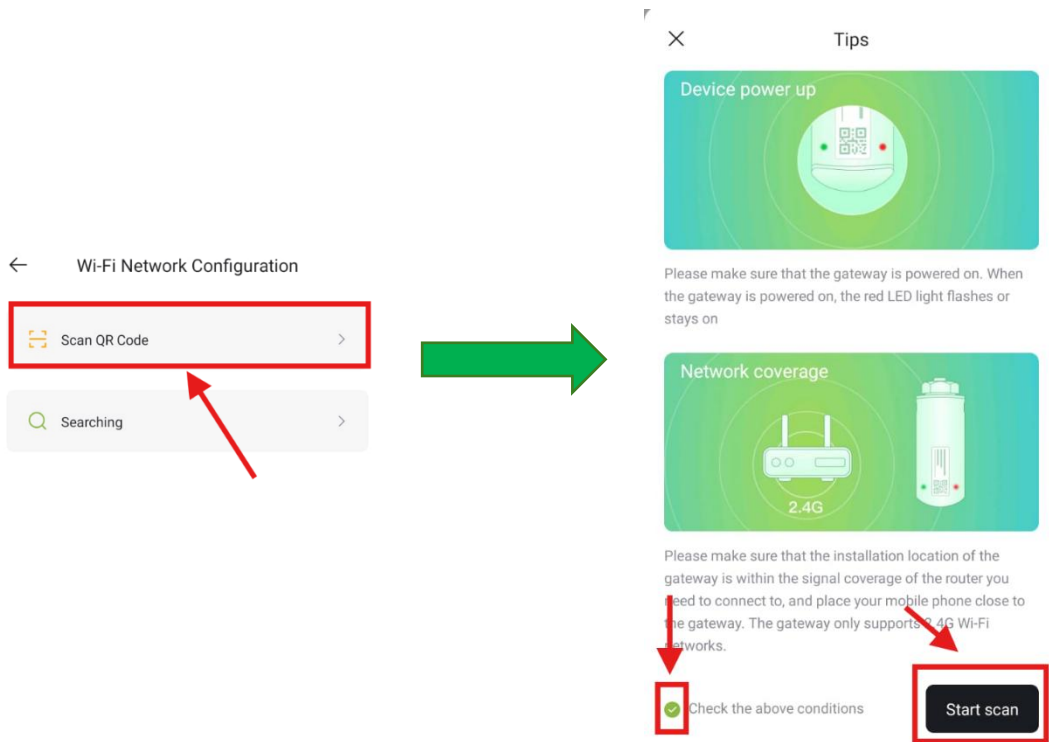
Step 2: Open app, simply register and login using your email. Or click **Demo** in right-top corner without registering. Then tap **Me** to enter profile page.



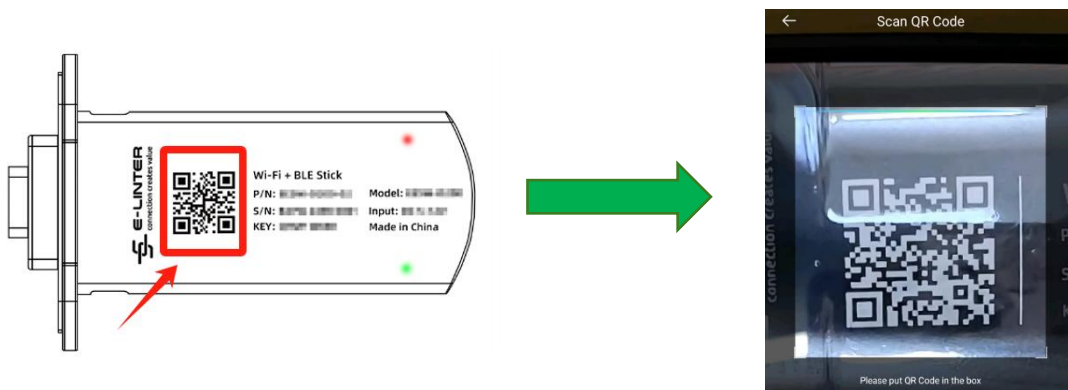
Step 3: Tap **Tools** and select **Wi-Fi Network Configuration**.



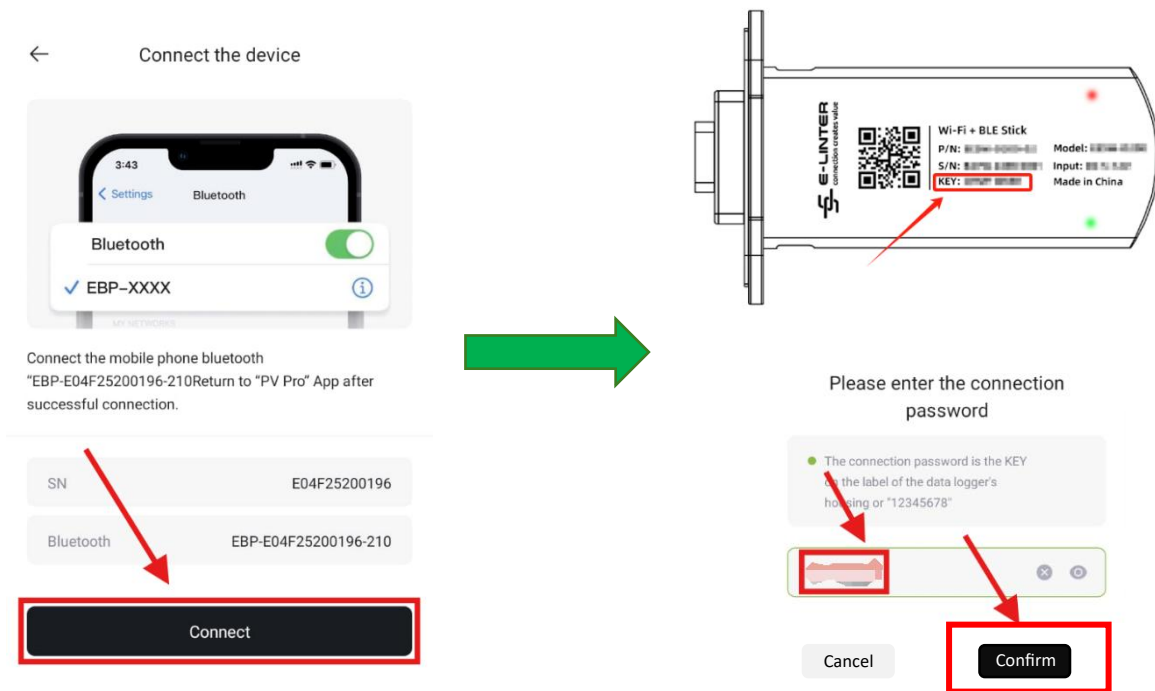
Step 4: Select **Scan QR Code** and it will ask you to check all required conditions. Tick the box if all conditions are met and tap **Start scan**.



Step 5: Use your phone to scan the QR code on Wi-Fi dongle, make sure camera access is allowed for PV Pro app.



Step 6: Ensure Bluetooth is open on phone. Follow the instructions and tap **Connect**. Enter the password (KEY) located on the dongle and tap **Confirm**.



Step 7: Choose your home Wi-Fi and enter your password. Tap **Confirm** and wait until configuration is done.

