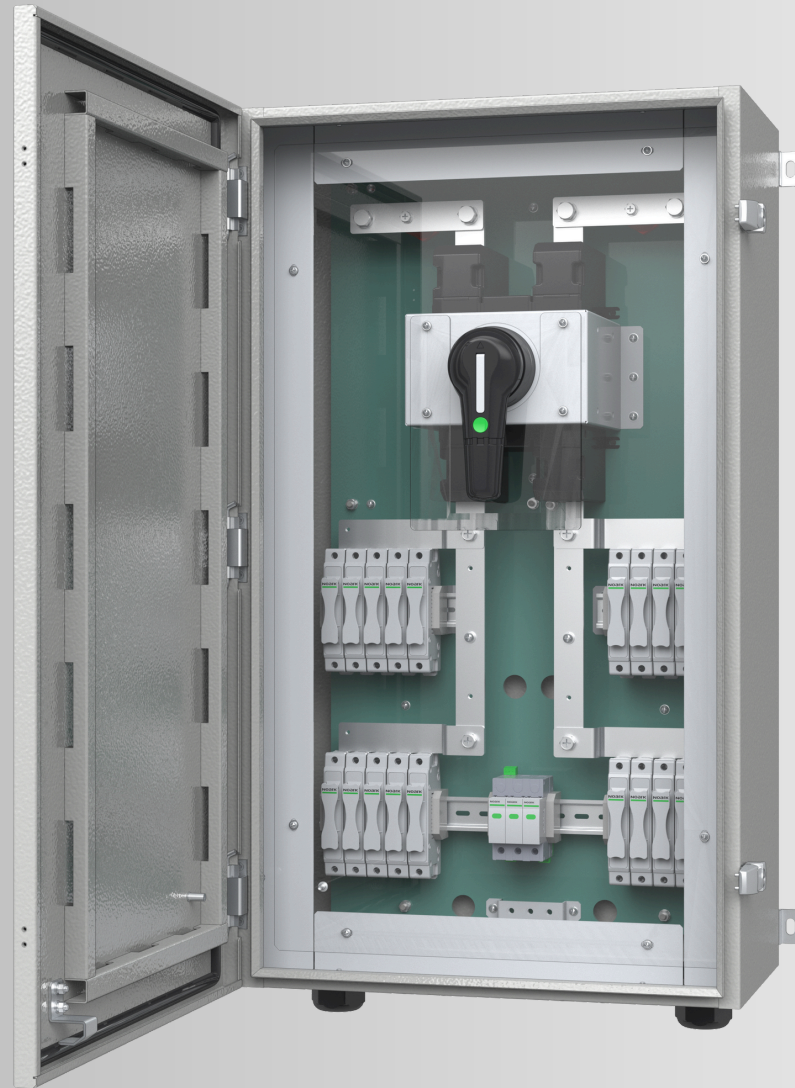






MODEL SELECTION

Order Code	Model	Enclosure Material	Input / Output	Layout	Monitoring
9710101	PVBx101-EG	Electro-Galvanized (EG) Steel	10-IN / 1-OUT	Vertical	No
9710202	PVBx202-EG	Electro-Galvanized (EG) Steel	20-IN / 2-OUT	Vertical	No
9710181	PVBx181-EG	Electro-Galvanized (EG) Steel	18-IN / 1-OUT	Vertical	No
9711161	PVBxZ161-EG	Electro-Galvanized (EG) Steel	16-IN / 1-OUT	Horizontal	Yes
9711241	PVBxZ241-EG	Electro-Galvanized (EG) Steel	24-IN / 1-OUT	Horizontal	Yes
9711321	PVBxZ321-EG	Electro-Galvanized (EG) Steel	32-IN / 1-OUT	Horizontal	Yes
9720101	PVBx101-SS	Stainless Steel (SS)	10-IN / 1-OUT	Vertical	No
9720202	PVBx202-SS	Stainless Steel (SS)	20-IN / 2-OUT	Vertical	No
9720181	PVBx181-SS	Stainless Steel (SS)	18-IN / 1-OUT	Vertical	No
9720161	PVBxZ161-EG	Stainless Steel (SS)	16-IN / 1-OUT	Horizontal	Yes
9720241	PVBxZ241-EG	Stainless Steel (SS)	24-IN / 1-OUT	Horizontal	Yes
9720321	PVBxZ321-EG	Stainless Steel (SS)	32-IN / 1-OUT	Horizontal	Yes



PVBx101-EG/SS

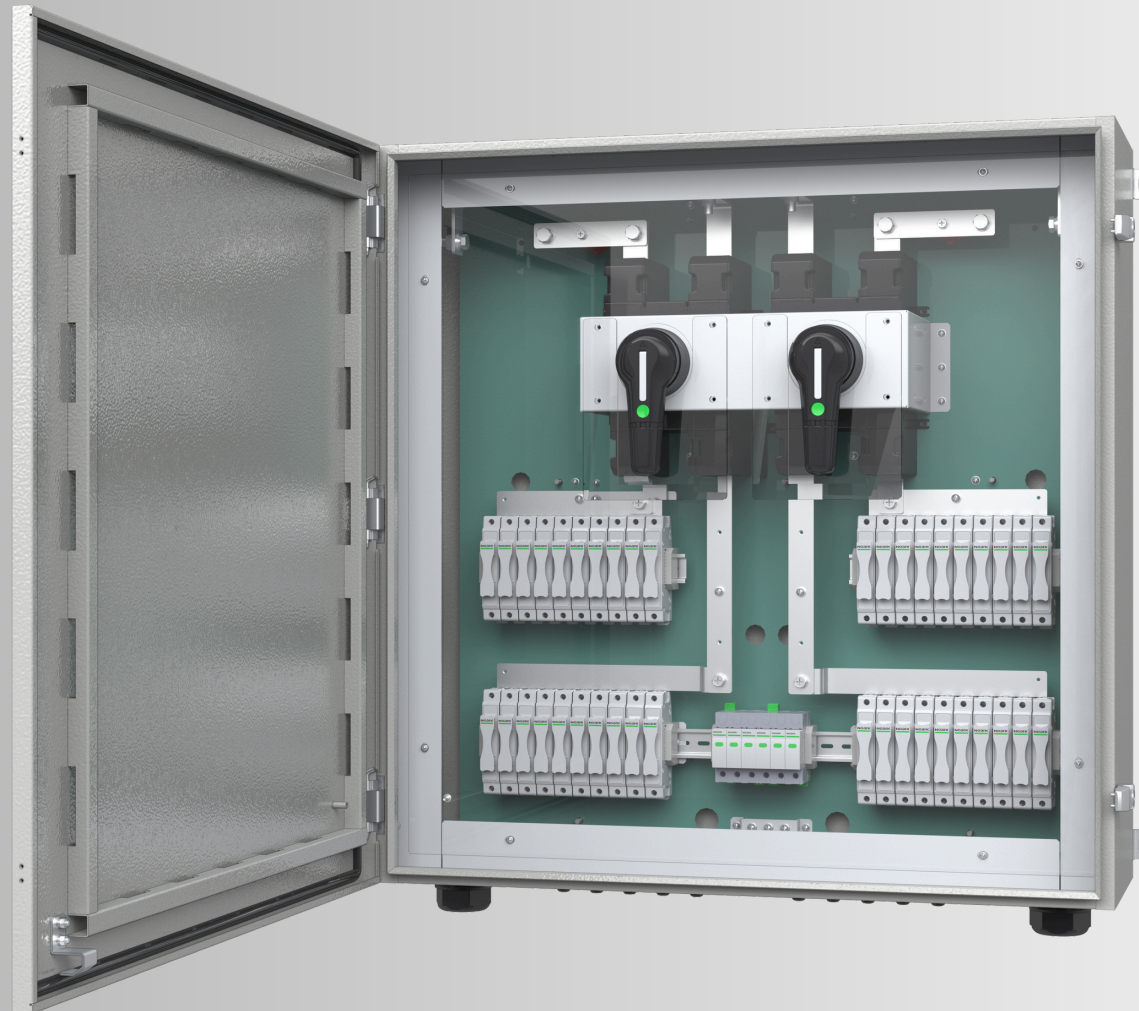
Application	
Ambient temperature	-25°C ~ +50°C
Relative humidity	0 ~ 90%
Altitude above sea level	≤2000m
Compliance	IEC/EN 61439-2 IP65
Electrical	
Rated op. voltage Ue	DC1500V
Rated insulation voltage Ui	DC1500V
Rated impulse withstand voltage Uimp	12KV
Earthing	Yes
No. of String (input)	Up to 10
Input Protection	Fuse on both Negative and Positive
	Fuse-links size 10*85mm
	20A, 25A, 30A
No. of Output	1
Output Protection	Switch-disconnector with terminal cover
	350A (DC-PV2 1500V)
	Internal rotary handle
Surge Protection	SPD PV Type II
Monitoring	No
Enclosure	
Material	EG Steel or Stainless Steel
Dimension (H * W * D)	850 * 500 * 300 mm
Thickness	2mm
Degree of Protection	IP65
Finishing	Epoxy powder coating with thickness 80um
Anti-corrosion ISO12944	C5
Colour	PANTONE Cool Gray 3 CP
String input	Gland or MC4 Connector
Mounting	Wall mount Lugs

String Combiner Box (1500Vdc)

10-IN 1-OUT

- Compliant to IEC/EN 61439-2 and AS/NZS 5033
- All components are rated at 1500Vdc
- Up to 10 strings input
- Single output with one DC-PV2 rated switch disconnector
- Input fuse protection (fuse included)
- Wall mounted with metal lugs
- Two options for enclosure materials (EG Steel or Stainless Steel)
- Suitable for Fronius Tauro, Goodwe ETC inverters

Main Components			
No.	Item	Model	Quantity
1	Switch Disconnector	Noark EX9IZ 630A HV 11 350A	1
2	Surge Arrestor	Noark EX9UEP 20R 3P 1500V	1
3	Fuse Holders	Noark EX9FP30H	20
4	Incoming Fuse	Noark EX9FP30 30H	20
5	Incoming Glands	M12X1.5	20
6	Outgoing Gland	M50X1.5	1
7	Earth Wire Gland	M16X1.5	1



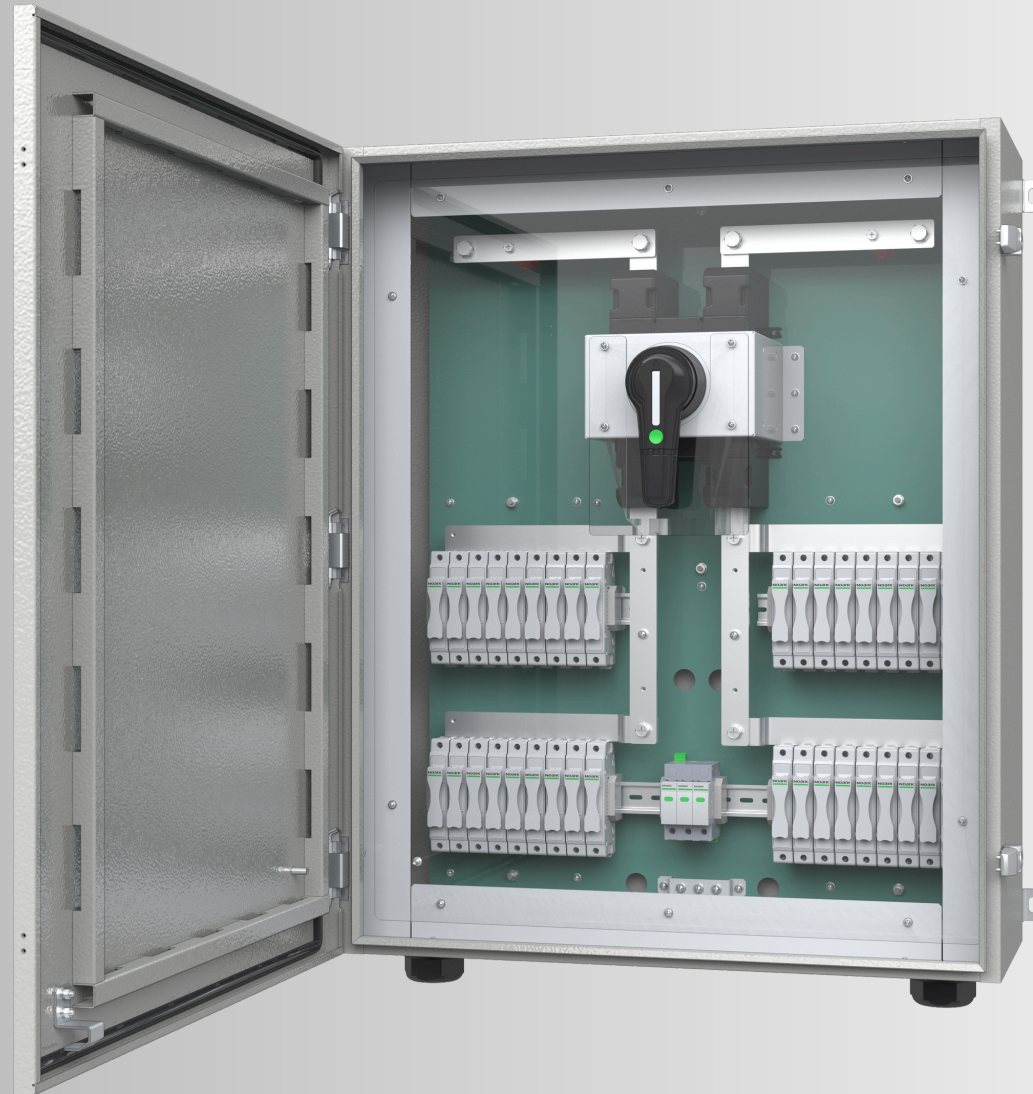
PVBx202-EG/SS

Application	
Ambient temperature	-25°C ~ +50°C
Relative humidity	0 ~ 90%
Altitude above sea level	≤2000m
Compliance	IEC/EN 61439-2 IP65
Electrical	
Rated op. voltage Ue	DC1500V
Rated insulation voltage Ui	DC1500V
Rated impulse withstand voltage Uimp	12KV
Earthing	Yes
No. of String (input)	Up to 20
Input Protection	Fuse on both Negative and Positive
	Fuse-links size 10*85mm
	20A, 25A, 30A
No. of Output	2
Output Protection	Switch-disconnector with terminal cover
	350A (DC-PV2 1500V)
	Internal rotary handle
Surge Protection	SPD PV Type II
Monitoring	No
Enclosure	
Material	EG Steel or Stainless Steel
Dimension (H * W * D)	850 * 500 * 300 mm
Thickness	2mm
Degree of Protection	IP65
Finishing	Epoxy powder coating with thickness 80um
Anti-corrosion ISO12944	C5
Colour	PANTONE Cool Gray 3 CP
String input	Gland or MC4 Connector
Mounting	Wall mount Lugs

String Combiner Box (1500Vdc) 20-IN 2-OUT

- Compliant to IEC/EN 61439-2 and AS/NZS 5033
- All components are rated on 1500V DC
- Up to 20 strings input
- Dual output with DC-PV2 rated switch disconnector
- Input fuse protection (fuse included)
- Wall mounted with metal lugs
- Two options for enclosure materials (EG Steel or Stainless Steel)
- Suitable for Fronius Tauro, Goodwe ETC inverters

Main Components			
No.	Item	Model	Quantity
1	Switch Disconnector	Noark EX9IZ 630A HV 11 350A	2
2	Surge Arrestor	Noark EX9UEP 20R 3P 1500V	2
3	Fuse Holders	Noark EX9FP30H	40
4	Incoming Fuse	Noark EX9FP30 30H	40
5	Incoming Glands	M12X1.5	40
6	Outgoing Gland	M50X1.5	2
7	Earth Wire Gland	M16X1.5	1



PVBx181-EG/SS

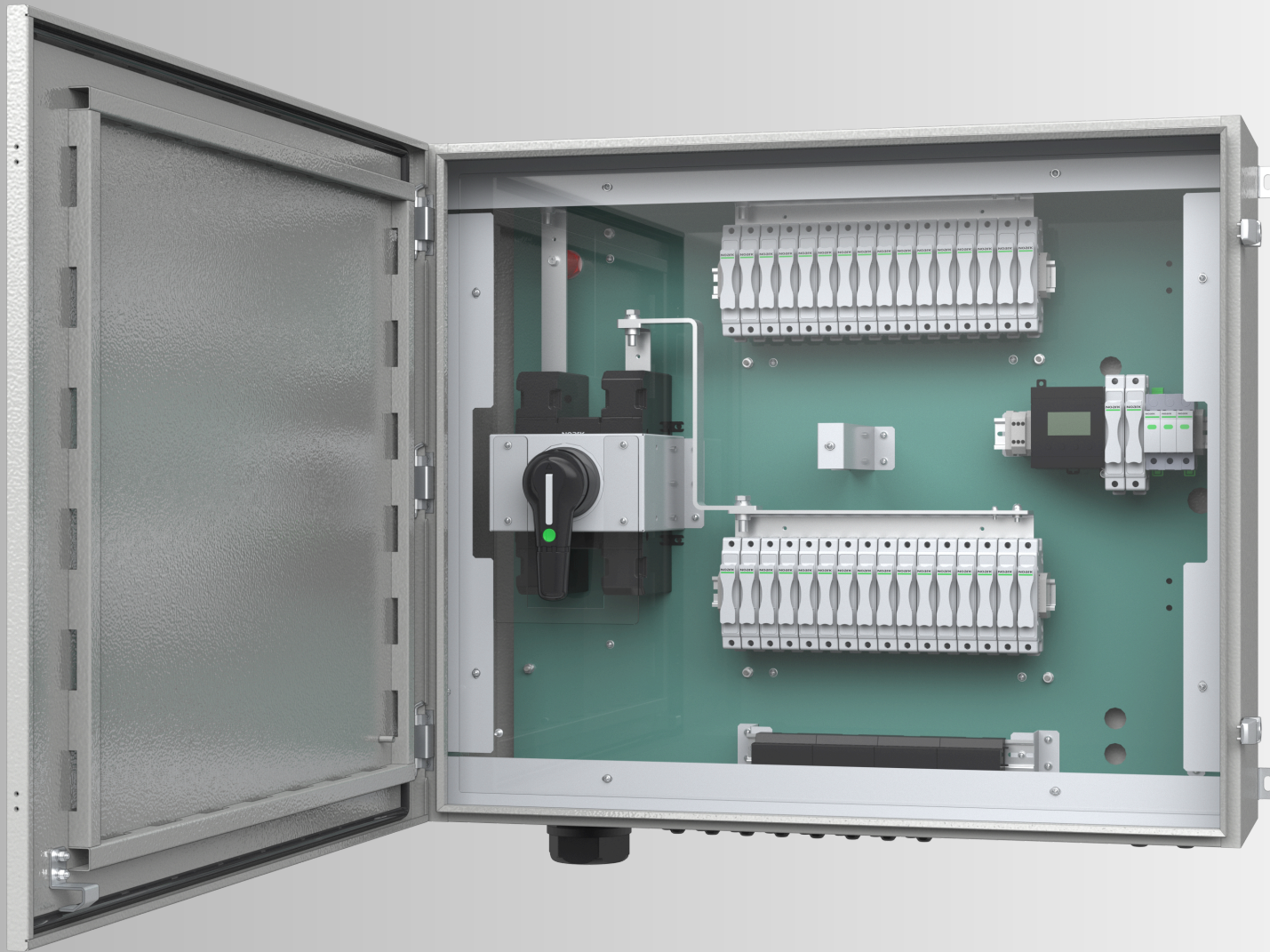
Application	
Ambient temperature	-25°C ~ +50°C
Relative humidity	0 ~ 90%
Altitude above sea level	≤2000m
Compliance	IEC/EN 61439-2 IP65
Electrical	
Rated op. voltage Ue	DC1500V
Rated insulation voltage Ui	DC1500V
Rated impulse withstand voltage Uimp	12KV
Earthing	Yes
No. of String (input)	Up to 18
Input Protection	Fuse on both Negative and Positive
	Fuse-links size 10*85mm
	20A, 25A, 30A
No. of Output	1
Output Protection	Switch-disconnector with terminal cover
	500A (DC-PV2 1500V)
	Internal rotary handle
Surge Protection	SPD PV Type II
Monitoring	No
Enclosure	
Material	EG Steel or Stainless Steel
Dimension (H * W * D)	850 * 700 * 300 mm
Thickness	2mm
Degree of Protection	IP65
Finishing	Epoxy powder coating with thickness 80um
Anti-corrosion ISO12944	C5
Colour	PANTONE Cool Gray 3 CP
String input	Gland or MC4 Connector
Mounting	Wall mount Lugs

String Combiner Box (1500Vdc)

18-IN 1-OUT

- Compliant to IEC/EN 61439-2 and AS/NZS 5033
- All components are rated at 1500Vdc
- Up to 18 strings input
- Single output with DC-PV2 rated switch disconnector
- Input fuse protection (fuse included)
- Wall mounted with metal lugs
- Two options for enclosure materials (EG Steel or Stainless Steel)

Main Components			
No.	Item	Model	Quantity
1	Switch Disconnector	Noark EX9IZ 630A HV 11 500A	1
2	Surge Arrestor	Noark EX9UEP 20R 3P 1500V	1
3	Fuse Holders	Noark EX9FP30H	36
4	Incoming Fuse	Noark EX9FP30 30H	36
5	Incoming Glands	M12X1.5	36
6	Outgoing Gland	M72X1.5	1
7	Earth Wire Gland	M16X1.5	1



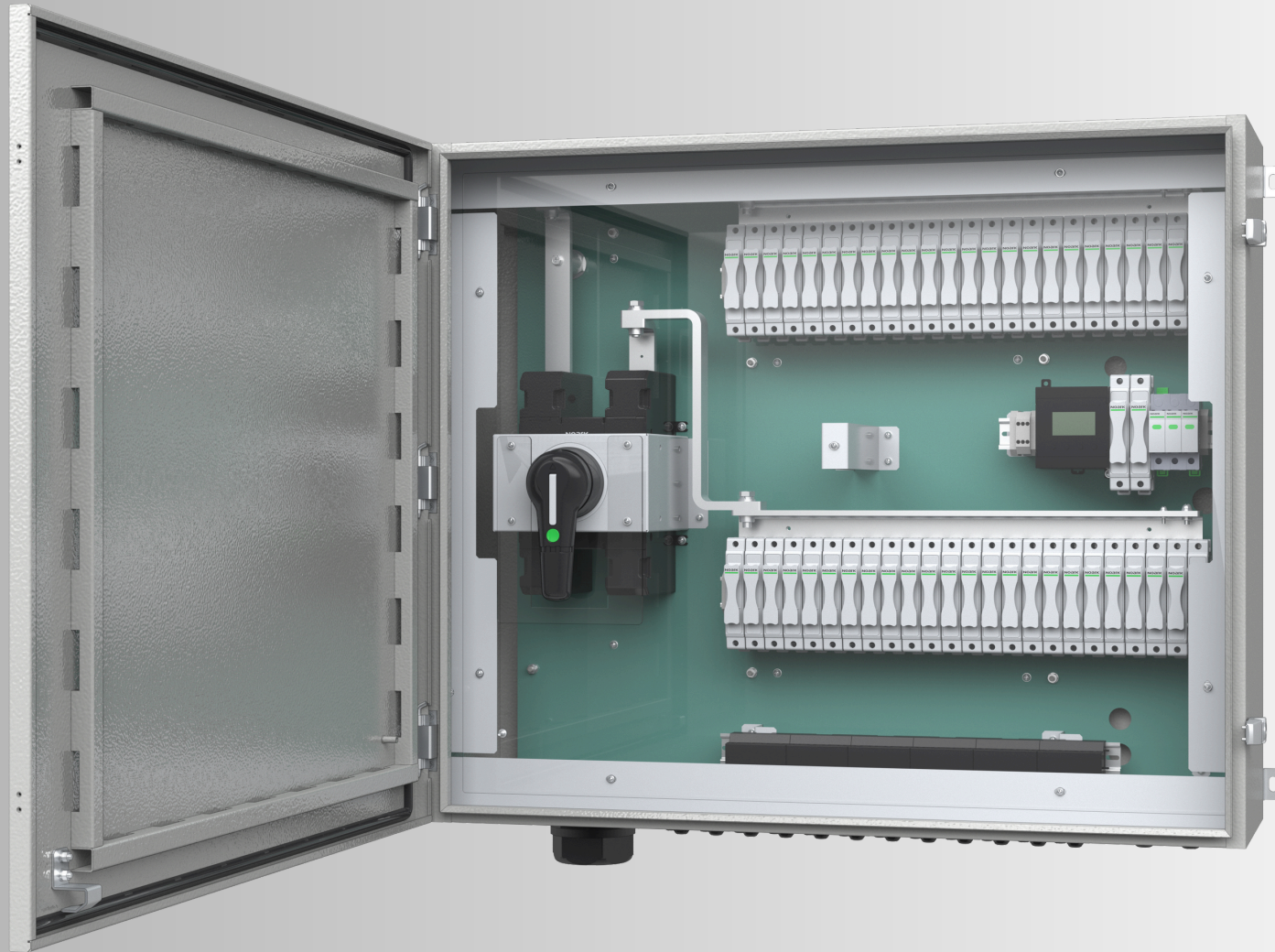
PVBx161-EG/SS

Application	
Ambient temperature	-25°C ~ +50°C
Relative humidity	0 ~ 90%
Altitude above sea level	≤2000m
Compliance	IEC/EN 61439-2 IP65
Electrical	
Rated op. voltage Ue	DC1500V
Rated insulation voltage Ui	DC1500V
Rated impulse withstand voltage Uimp	12KV
Earthing	Yes
No. of String (input)	Up to 16
Input Protection	Fuse on both Negative and Positive
	Fuse-links size 10*85mm
	20A, 25A, 30A
No. of Output	1
Output Protection	Switch-disconnector with terminal cover
	400A (DC-PV2 1500V)
	Internal rotary handle
Surge Protection	SPD PV Type II
Monitoring	
	Yes
- Working temperature	-30°C ~ +50°C
- Relative humidity	0 ~ 95%
- Rated input voltage	450VDC ~ 1500VDC
- Rated input current	20A - 30A
- Maximum input	24
- Communication protocol	Modbus-RTU
Enclosure	
Material	EG Steel or Stainless Steel
Dimension (H * W * D)	750 * 900 * 300 mm
Thickness	2mm
Degree of Protection	IP65
Finishing	Epoxy powder coating with thickness 80um
Anti-corrosion ISO12944	C5
Colour	PANTONE Cool Gray 3 CP
String input	Gland or MC4 Connector
Mounting	Wall mount Lugs

String Combiner Box (1500Vdc) 16-IN 1-OUT with Monitoring

- Compliant to IEC/EN 61439-2 and AS/NZS 5033
- All components are rated at 1500Vdc
- Up to 16 strings input
- Single output with DC-PV2 rated switch disconnector
- Input fuse protection (fuse included)
- Wall mounted with metal lugs
- Two options for enclosure materials (EG Steel or Stainless Steel)
- Monitoring module available

Main Components			
No.	Item	Model	Quantity
1	Switch Disconnector	Noark EX9IZ 630A HV 11 400A+AX	1
2	Surge Arrestor	Noark EX9UEP 20R 3P 1500V	1
3	Fuse Holders	Noark EX9FP30H	34
4	Incoming Fuse	Noark EX9FP30 30H	32
5	Secondary Circuit Fuse	Noark EX9FP30 2H	2
6	Monitor Unit	FR-DCMG-MMPU	1
7	Current transformer	FR-DCMG-HS4A	4
8	Incoming Glands	M12X1.5	32
9	Outgoing Gland	M72X1.5	1
10	Earth Wire Gland	M16X1.5	1
11	Communication Wire Gland	M16X1.5	2



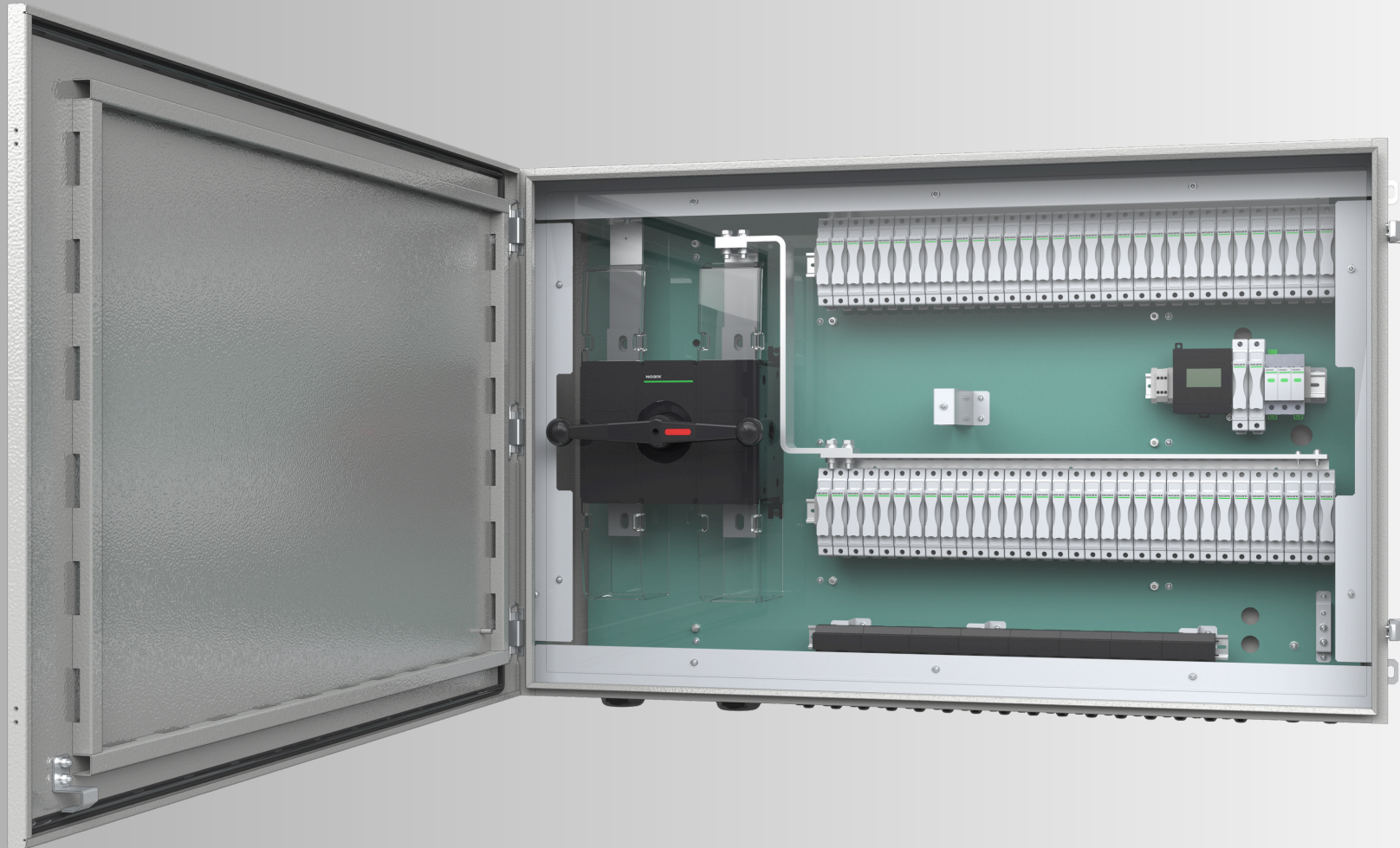
PVBx241-EG/SS

Application	
Ambient temperature	-25°C ~ +50°C
Relative humidity	0 ~ 90%
Altitude above sea level	≤2000m
Compliance	IEC/EN 61439-2 IP65
Electrical	
Rated op. voltage Ue	DC1500V
Rated insulation voltage Ui	DC1500V
Rated impulse withstand voltage Uimp	12KV
Earthing	Yes
No. of String (input)	Up to 24
Input Protection	Fuse on both Negative and Positive
	Fuse-links size 10*85mm
	20A, 25A, 30A
No. of Output	1
Output Protection	Switch-disconnector with terminal cover
	630A (DC-PV2 1500V)
	Internal rotary handle
Surge Protection	SPD PV Type II
Monitoring	
	Yes
- Working temperature	-30°C ~ +50°C
- Relative humidity	0 ~ 95%
- Rated input voltage	450VDC ~ 1500VDC
- Rated input current	20A - 30A
- Maximum input	24
- Communication protocol	Modbus-RTU
Enclosure	
Material	EG Steel or Stainless Steel
Dimension (H * W * D)	750 * 900 * 300 mm
Thickness	2mm
Degree of Protection	IP65
Finishing	Epoxy powder coating with thickness 80um
Anti-corrosion ISO12944	C5
Colour	PANTONE Cool Gray 3 CP
String input	Gland or MC4 Connector
Mounting	Wall mount Lugs

String Combiner Box (1500Vdc) 24-IN 1-OUT with Monitoring

- Compliance to IEC/EN 61439-2 and AS/NZS 5033
- All components are rated at 1500Vdc
- Up to 24 strings input
- Single output with DC-PV2 rated switch disconnector
- Input fuse protection (fuse included)
- Wall mounted with metal lugs
- Two options for enclosure materials (EG Steel or Stainless Steel)
- Monitoring module available

Main Components			
No.	Item	Model	Quantity
1	Switch Disconnector	Noark EX9IZ 630A HV 11 630A+AX	1
2	Surge Arrestor	Noark EX9UEP 20R 3P 1500V	1
3	Fuse Holders	Noark EX9FP30H	50
4	Incoming Fuse	Noark EX9FP30 30H	48
5	Secondary Circuit Fuse	Noark EX9FP30 2H	2
6	Monitor Unit	FR-DCMG-MMPU	1
7	Current transformer	FR-DCMG-HS4A	6
8	Incoming Glands	M12X1.5	48
9	Outgoing Gland	M72X2	1
10	Earth Wire Gland	M16X1.5	1
11	Communication Wire Gland	M16X1.5	2



PVBx321-EG/SS

Application	
Ambient temperature	-25°C ~ +50°C
Relative humidity	0 ~ 90%
Altitude above sea level	≤2000m
Compliance	IEC/EN 61439-2 IP65
Electrical	
Rated op. voltage Ue	DC1500V
Rated insulation voltage Ui	DC1500V
Rated impulse withstand voltage Uimp	12KV
Earthing	Yes
No. of String (input)	Up to 32
Input Protection	Fuse on both Negative and Positive
	Fuse-links size 10*85mm
	20A, 25A, 30A
No. of Output	1
Output Protection	Switch-disconnector with terminal cover
	800A (DC-PV2 1500V)
	Internal rotary handle
Surge Protection	SPD PV Type II
Monitoring	
	Yes
- Working temperature	-30°C ~ +50°C
- Relative humidity	0 ~ 95%
- Rated input voltage	450VDC ~ 1500VDC
- Rated input current	20A - 30A
- Maximum input	32
- Communication protocol	Modbus-RTU
Enclosure	
Material	EG Steel or Stainless Steel
Dimension (H * W * D)	750 * 1200 * 300 mm
Thickness	2mm
Degree of Protection	IP65
Finishing	Epoxy powder coating with thickness 80um
Anti-corrosion ISO12944	C5
Colour	PANTONE Cool Gray 3 CP
String input	Gland or MC4 Connector
Mounting	Wall mount Lugs

String Combiner Box (1500Vdc) 32-IN 1-OUT with Monitoring

- Compliant to IEC/EN 61439-2 and AS/NZS 5033
- All components are rated at 1500Vdc
- Up to 32 strings input
- Single output with DC-PV2 rated switch disconnector
- Input fuse protection (fuse included)
- Wall mounted with metal lugs
- Two options for enclosure materials (EG Steel or Stainless Steel)
- Monitoring module available

Main Components			
No.	Item	Model	Quantity
1	Switch Disconnector	Noark EX9IZ 630A HV 11 800A+AX	1
2	Surge Arrestor	Noark EX9UEP 20R 3P 1500V	1
3	Fuse Holders	Noark EX9FP30H	66
4	Incoming Fuse	Noark EX9FP30 30H	64
5	Secondary Circuit Fuse	Noark EX9FP30 2H	2
6	Monitor Unit	FR-DCMG-MMPY	1
7	Current transformer	FR-DCMG-HS4A	8
8	Incoming Glands	M12X1.5	64
9	Outgoing Gland	M72X2	2
10	Earth Wire Gland	M16X1.5	1
11	Communication Wire Gland	M16X1.5	2

NOARK

EMPOWERING SUSTAINABILITY

+61 1300 771 739

info@noark.au

Warehouse 1, 10-12 Fairford Rd Padstow 2211 NSW



#noarksocial

noark.au